

CONTENTS

	Page
Introduction	6 - 9
Part I - Housing Activity	
Aggregate house completions	10
Aggregate house completions - chart	11
Total house completions - by area	12
Private house completions - by area	12
New house guarantee registrations	13
New houses completed - by type	14 - 15
Part II - Housing Loans	
Loan approvals and payments:	
- All agencies	16
- All agencies - chart	17
- Building societies	18
- Banks and Other Agencies	19
- Local authorities	20
Percentage share of mortgage market	21
Breakdown of mortgage market by annuity and endowment mortgages	22
Breakdown of mortgage market by fixed and variable rate mortgages	23
Ranges of loans paid - Dublin	24
Ranges of loans paid - whole country	25
Part III - Profile of Borrowers	
Previous tenure of borrowers - Dublin	26
Previous tenure of borrowers - whole country	27
Marital status of borrowers - Dublin	28
Marital status of borrowers - whole country	29
Ranges of income of borrowers - Dublin	30
Ranges of income of borrowers - whole country	31
Occupation of borrowers	32

Part IV - House Prices

New and second-hand house prices - chart	33
New house prices	34 - 35
Second-hand house prices	36 - 37
New house prices (excluding apartments)	38
New apartment prices	39
Second-hand house prices (excluding apartments)	40
Second-hand apartment prices	41
Ranges of house prices - Dublin	42
Ranges of house prices - whole country	43
Price/mortgage interest rates/earnings/cost indices - chart	44
Price/mortgage interest rates/earnings/cost indices	45
House building cost index	46

Part V - Local Authority Housing

Sale of local authority dwellings	47
Local authority housing - by area	48 - 49
First time lettings by local authorities	50 - 51
Number of local authority houses let	52
Local authority management and maintenance expenditure	53
Local authority housing revenue account-expenditure & income	54 - 59

Part VI - Activity under Social Housing Schemes

Summary	60
Shared ownership-transactions completed during 2000	61
Shared ownership	62
Affordable housing	63
Mortgage allowance	64
Provision of bathroom facilities	65
Improvement works in lieu of re-housing	65
Extensions to local authority houses	66
Housing sites	67
Voluntary housing:	
- Rental subsidy	68
- Capital assistance	69

	Page
Part VII - Traveller Families in Local Authority or Local Authority Assisted Accommodation, on the Roadside or other Private Accommodation at 24 November 2000	70 - 71
Part VIII - Housing Grants	
New house grants	72
House improvement grants	72
Disabled persons & essential repairs grants-summary of payments	73
Disabled persons grants – activity in 2000	74
Essential repairs grants – activity in 2000	75
Water and sewerage grants	76
Part IX - Enforcement of Statutory Requirements:-Rented Housing 2000	77
Part X - Housing (Registration of Rented Houses) Regulations 1996	78
Part XI - Capital Investment in Housing	
Public capital expenditure on housing	79
Capital formation in housing	79

INTRODUCTION

PART I - HOUSING ACTIVITY

House Completions

The number of new houses (including apartments) completed in the period since 1996 is given in Part I, together with a breakdown between the local authority, private and voluntary sectors.

Update

Trends in the completion figures for new houses between the December quarter 2000 and the September quarter 2000 and in 2000 over the previous year are as follows:

Category 2000	Change on September Quarter'00	Change in year over year 1999
Total houses	+ 12%	+ 7%
* Private houses	+ 8%	+ 8%
* Local Authority houses	+103%	-24%
Voluntary/non-profit houses	+ 8%	+64%

* The breakdown for private and local authority housing is provisional. The local authority figures do not include houses acquired by the authorities (see page 48).

New House Guarantee Registrations

Part I also sets out details on the number of new houses registered under HomeBond. Under this scheme houses are generally registered prior to the commencement of construction work and registrations serve as a useful leading indicator of housing activity. It should be noted that not all new houses are registered under this scheme.

PART II - HOUSING LOANS

Part II provides details of the number and value of loans approved and paid since 1996. The information is broken down between the following categories; banks and other agencies, building societies and local authorities. A breakdown between annuity and endowment mortgages, fixed and variable interest rate mortgages and a percentage breakdown of the range of house loans paid is also given.

Update

The changes in the **number** of loans approved and paid by all agencies between the December quarter 2000 and the September quarter 2000 and in 2000 over the previous year are as follows:

Number of:	Change on September Quarter'00	Change in year 2000 over year 1999
Loans Approved	-9%	+3%
Loans Paid	-6%	+5%

Note

Arising from the conversion of First National Building Society to First Active plc. in 1998 there is a change in the categories of lender used in relation to the data on loan approvals and payments (pages 16 to 21) and house prices (pages 34 to 41). First Active plc. is now included under "Banks and Other Agencies" and figures are shown retrospectively to 1996 on this basis.

PART III - PROFILE OF BORROWERS

Part III gives a profile of borrowers in relation to previous tenure, marital status, income and occupation.

PART IV - HOUSE PRICES

The house price figures shown in Part IV of the Bulletin are average prices for the quarter or year as the case may be, and are derived from the data supplied by the mortgage lending agencies on loans approved by them. In comparing house price figures from one period to another, account should be taken of the fact that changes in the mix of houses and apartments to which the data relates affect the average figures. Prices are shown for the whole country, the five main urban areas (Cork, Dublin, Limeick, Waterford and Galway) and for other areas of the country. Average prices are shown separately for houses and apartments from the March Quarter 1997. A percentage breakdown of the ranges of house prices is also provided.

Update

The changes in average house prices in the year 2000 compared to 1999, between the December quarter 2000 and the September quarter 2000 and between the December quarter 2000 and the corresponding quarter in 1999 are as follows:

<i>House type and area</i>	<i>2000 on 1999</i>	<i>Dec. Qtr'00 on Sept. Qtr'00</i>	<i>Dec. Qtr'00 on Dec. Qtr'99</i>
<i>New House Prices</i>			
<i>Nationally</i>	+13.9%	+6.2%	+13.8%
<i>Dublin Area</i>	+14.6%	+6.0%	+12.5%
<i>Second-hand Houses Prices</i>			
<i>Nationally</i>	+16.7%	+0.7%	+14.0%
<i>Dublin Area</i>	+17.3%	+0.6%	+10.8%

PART V - LOCAL AUTHORITY HOUSING

Details in relation to local authority house completions, sales, management and maintenance expenditure are shown in Part V.

PART VI - ACTIVITY UNDER SOCIAL HOUSING SCHEMES

Activity under social housing schemes such as shared ownership system, rental subsidy scheme etc. are shown in Part VI.

PART VII - TRAVELLER FAMILIES IN LOCAL AUTHORITY OR LOCAL AUTHORITY ASSISTED ACCOMMODATION, OR ON THE ROADSIDE AT 24 NOVEMBER 2000

The information in relation to traveller families was compiled from returns from local authorities in respect of the situation which applied on 24 November, 2000.

The information supplied by local authorities is for the purposes of monitoring progress made at local level in meeting the accommodation needs of traveller families and cannot be regarded as a census of the number of travellers. The main information relates to numbers of traveller families which have been accommodated:

- (a) directly by local authorities
- (b) by voluntary bodies or travellers themselves with assistance of local authorities and
- (c) traveller families on the roadside or other unserved locations.

Terms used:

"Halting sites" includes permanent, temporary and transient sites.

"Roadside" includes families in private yards, gardens, fields and unofficial sites as well as the roadside.

"Group housing" is housing specifically designed to accommodate a number of traveller families.

PART VIII - HOUSING GRANTS

This Part contains details in relation to housing grants (including new house, disabled persons and essential repairs grants) approved and paid since 1996.

PART IX - ENFORCEMENT OF STATUTORY REQUIREMENTS:-RENTED HOUSING IN 2000

Part IX contains details of the level of enforcement by the local authorities of the standards and rent books regulations in 2000.

PART X - HOUSING (REGISTRATION OF RENTED HOUSES) REGULATIONS 1996

Details on the number of houses registered and on the number of landlords of registered houses at 31 December, 2000, is shown in this Part.

PART XI - CAPITAL INVESTMENT IN HOUSING

This Part gives public capital expenditure and capital formation in housing.

Note - Analysis of Loan Approvals

The data shown on pages 24-25, 30-31 and 42-43 have been derived from 31,400 mortgage loan statistical survey forms and on pages 26-29 and page 32 from a lesser number of forms (some forms had incomplete data) which have been submitted by borrowers at loan approval stage and returned to the Department by the mortgage lending agencies.

Euro Conversion Rate

With effect from 1 January, 1999 the fixed conversion rate between the Euro and the Irish pound is 1 Euro = IR£0.787564.

Revisions

Every effort is made to ensure that the figures published are as accurate as possible at the time of printing. The publication of revised figures is sometimes unavoidable where updated figures are received after a Bulletin has been published or where there has been typographical error. Revised figures are given in the subsequent issue to the Bulletin in order to maintain the highest possible level of accuracy of the published data.

Symbols and Conventions used

Rounding of figures:
where figures have been rounded, the sum of the constituent items may not always agree with the total shown.

Symbols used:
n/a = not available
(p) = provisional
(r) = revised

Please note that in this Bulletin, the term "house" includes a flat or apartment unless otherwise indicated.

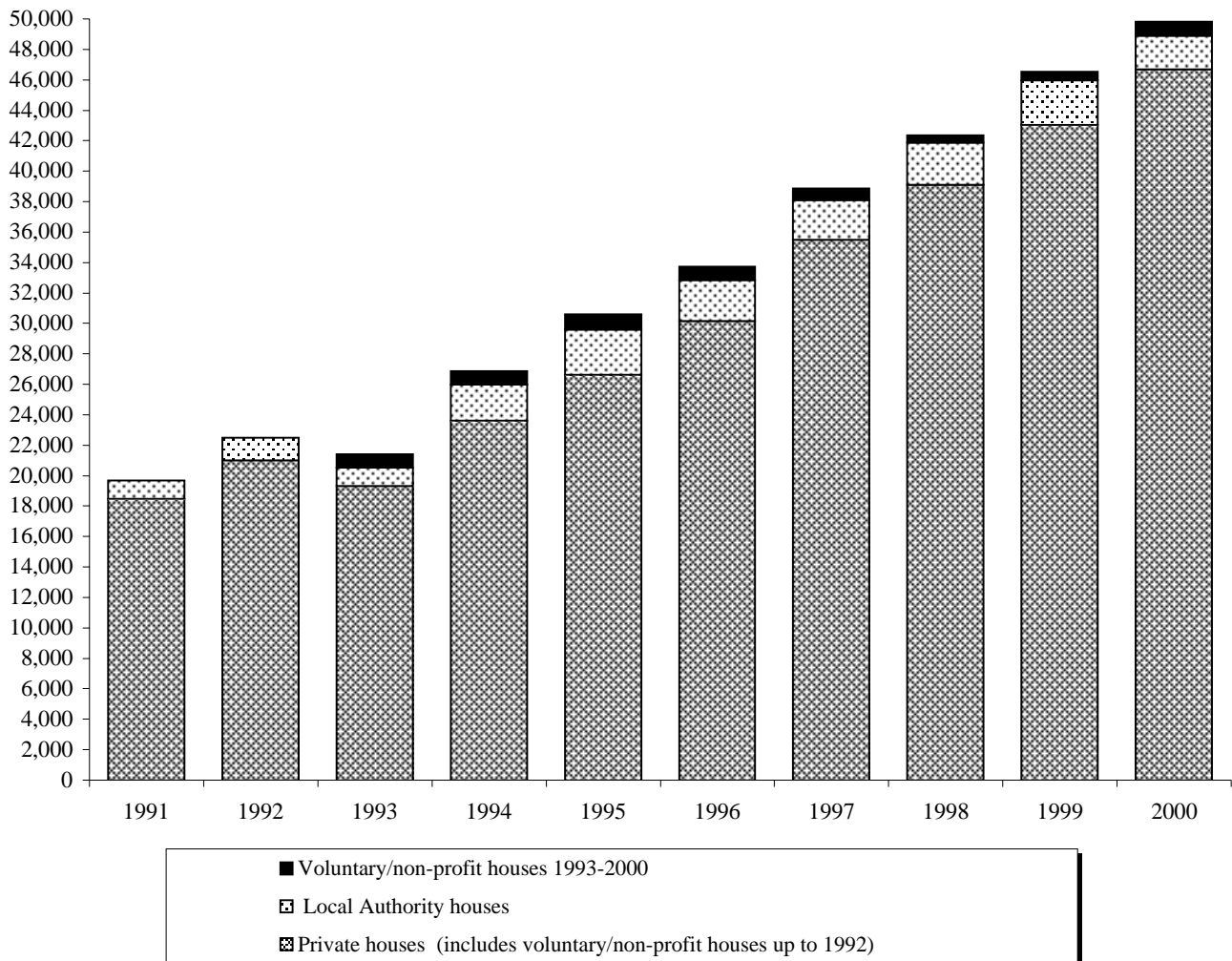
For further information on any of the statistics contained in this Bulletin, please contact the Department of the Environment and Local Government, Housing Policy & Finance Section, Custom House, Dublin 1.
Telephone 01-8882176 / 01-8882187.

PART I - HOUSING ACTIVITY

HOUSE COMPLETIONS

Year and Quarter	Social Housing		Private Houses	Total
	Local Authority Houses	Voluntary/ Non-Profit Houses		
1996	2,676	917	30,132	33,725
1997	2,632	756	35,454	38,842
1998	2,771	485	39,093	42,349
1999	2,909	579	43,024	46,512
2000	(p) 2,204	951	(p) 46,657	49,812
1998				
QI	535	27	8,010	8,572
QII	734	119	9,506	10,359
QIII	598	172	10,014	10,784
QIV	904	167	11,563	12,634
1999				
QI	516	148	9,930	10,594
QII	715	80	10,227	11,022
QIII	589	115	10,788	11,492
QIV	1,089	236	12,079	13,404
2000				
QI	272	133	10,302	10,707
QII	434	(r) 330	(r) 11,590	12,354
QIII	495	235	11,892	12,622
QIV	(p) 1,003	253	(p) 12,873	14,129

HOUSE COMPLETIONS



Footnotes: -

- (a) Following the enactment of the Local Government (Dublin) Act, 1993, three new county councils - Dun Laoghaire-Rathdown, Fingal and South Dublin replaced Dublin County Council and Dun Laoghaire Corporation on 1 January 1994.
- (b) The local authority figures include demountables and pre-fabricated houses.
- (c) Local authority house completions for years up to and including 1992 include a small but unquantified number of houses acquired by the authorities. The local authority house completions from 1993 onwards do not include houses acquired by them. These are shown separately on page 48.
- (d) The figures for private houses from 1993 onwards are not directly comparable with those for previous years which contained an unquantified number of voluntary/non-profit houses.
- (e) "Voluntary /non-profit houses" consists of completions under the rental subsidy and capital assistance schemes as shown by area on pages 68 and 69.

HOUSE COMPLETIONS - BY AREA

County Councils	TOTAL HOUSE COMPLETIONS					PRIVATE HOUSE COMPLETIONS				
	1996	1997	1998	1999	2000	1996	1997	1998	1999	(p)2000
Carlow	403	656	603	816	717	360	554	568	717	643
Cavan	325	440	495	664	696	270	362	453	597	644
Clare	966	1,435	1,221	1,487	1,652	880	1,362	1,162	1,383	1,563
Cork	2,461	3,222	3,903	3,702	4,546	2,221	2,947	3,758	3,471	4,356
Donegal	1,548	1,507	1,883	2,393	2,545	1,335	1,413	1,738	2,152	2,346
D/Laoghaire-Rathdown	1,053	712	549	886	860	939	544	432	848	843
Fingal	2,024	2,707	2,618	4,296	4,044	1,912	2,600	2,576	4,213	3,976
Galway	1,093	1,295	1,849	2,113	2,117	1,023	1,219	1,775	1,979	2,002
Kerry	1,024	1,242	1,638	1,686	1,665	865	1,148	1,513	1,506	1,581
Kildare	1,900	2,095	2,509	2,419	2,366	1,765	1,929	2,405	2,283	2,305
Kilkenny	562	628	701	708	736	498	586	645	636	671
Laois	404	399	452	660	839	352	366	425	577	791
Leitrim	221	265	295	396	658	179	227	264	366	626
Limerick	800	903	1,197	610	586	709	827	1,125	544	515
Longford	316	292	310	293	311	282	247	260	235	275
Louth	969	1,191	1,171	1,581	1,513	959	1,097	992	1,478	1,417
Mayo	1,097	1,431	1,527	1,797	2,237	987	1,349	1,431	1,684	2,021
Meath	1,154	1,318	1,422	1,480	2,303	1,035	1,223	1,331	1,336	2,227
Monaghan	334	295	423	353	426	315	269	360	344	372
Offaly	347	382	624	604	900	282	304	605	539	818
Roscommon	332	292	305	406	411	285	258	242	385	383
Sligo	563	666	903	865	708	504	560	746	828	627
South Dublin	2,244	2,479	2,013	2,049	2,139	2,122	2,403	1,847	1,902	1,906
Tipperary N.R.	520	749	823	1,032	1,132	409	706	747	982	1,119
Tipperary S.R.	407	478	557	606	521	290	332	470	518	440
Waterford	393	539	520	1,007	1,074	328	450	471	942	1,026
Westmeath	702	929	1,105	1,140	1,578	645	842	1,053	1,129	1,478
Wexford	992	1,446	1,484	2,375	2,432	864	1,282	1,390	2,212	2,198
Wicklow	1,168	1,147	1,335	1,294	1,484	1,044	908	1,173	1,171	1,408
County Boroughs										
Cork	859	1,132	1,266	1,006	1,186	771	1,078	1,198	804	1,081
Dublin	4,125	3,427	3,777	2,804	2,362	3,514	3,187	3,420	2,527	2,178
Galway	1,047	1,223	1,026	875	1,116	992	1,107	895	738	1,035
Limerick	539	946	906	1,336	1,234	424	884	833	1,280	1,190
Waterford	433	574	539	373	318	372	484	390	318	196
Conversions	400	400	400	400	400	400	400	400	400	400
TOTALS	33,725	38,842	42,349	46,512	49,812	30,132	35,454	39,093	43,024	46,657

Footnotes:- (a) County Council areas include Boroughs and Urban Districts.

(b) See footnotes on page 11.

NEW HOUSE GUARANTEE REGISTRATIONS

"HOMEBOND"

County	1996	1997	1998	1999	2000				TOTAL
					Q1	Q11	Q111	Q1V	
Carlow	325	508	495	529	127	50	106	86	369
Cavan	183	152	176	229	43	108	39	80	270
Clare	722	831	801	1,158	243	290	253	105	891
Cork	2,712	3,037	3,266	4,174	1,126	1,506	753	1,039	4,424
Donegal	389	425	736	1,020	288	283	172	107	850
Dublin *	8,591	8,040	8,356	8,956	2,673	2,448	1,655	1,346	8,122
Galway	1,444	1,281	1,381	1,721	693	538	326	274	1,831
Kerry	575	837	684	727	192	298	136	113	739
Kildare	1,510	2,052	2,361	1,972	458	706	519	381	2,064
Kilkenny	387	450	511	512	217	176	123	91	607
Laois	193	233	293	597	65	203	262	279	809
Leitrim	30	38	35	220	64	59	47	89	259
Limerick	1,236	1,543	1,439	1,543	437	448	254	242	1,381
Longford	8	33	31	42	2	3	40	58	103
Louth	721	841	1,087	1,020	214	307	508	269	1,298
Mayo	448	576	763	830	243	326	170	164	903
Meath	872	1,283	1,139	2,350	520	828	839	408	2,595
Monaghan	92	52	111	47	24	40	113	28	205
Offaly	167	132	289	431	(r)122	250	106	160	638
Roscommon	100	86	152	183	50	54	72	78	254
Sligo	268	547	472	391	84	145	78	62	369
Tipperary	480	664	730	1,024	(r)343	255	272	154	1,024
Waterford	717	840	893	919	362	366	263	130	1,121
Westmeath	389	584	725	928	316	327	135	198	976
Wexford	532	916	1,357	1,640	405	547	335	410	1,697
Wicklow	678	1,099	784	689	183	196	361	74	814
TOTALS	23,769	27,080	29,067	33,852	9,494	10,757	7,937	6,425	34,613

Footnotes:- (a) County Council areas include County Boroughs, Boroughs and Urban Districts.

(b) * Figures for County Dublin include the new county councils of Dun Laoghaire-Rathdown, Fingal and South Dublin.

HOUSE COMPLETIONS

NEW HOUSES COMPLETED BY TYPE FROM JANUARY TO 31 DECEMBER 2000

County Councils	Bungalow	House Detached	House Semi-Detached	House Terraced	Flat/ Apartment	Total
Carlow	172	265	198	58	24	717
Cavan	182	313	118	19	64	696
Clare	227	809	491	36	89	1,652
Cork	844	1,536	1,351	277	538	4,546
Donegal	777	1,174	354	3	237	2,545
D/Laoghaire-Rathdown	8	224	81	41	506	860
Fingal	142	391	1,911	683	917	4,044
Galway	303	1,317	363	2	132	2,117
Kerry	519	693	293	35	125	1,665
Kildare	472	824	820	67	183	2,366
Kilkenny	228	301	150	19	38	736
Laois	313	387	119	2	18	839
Leitrim	277	246	52	4	79	658
Limerick	292	184	76	12	22	586
Longford	157	92	14	1	47	311
Louth	200	457	581	74	201	1,513
Mayo	388	1,008	651	2	188	2,237
Meath	337	668	1,006	93	199	2,303
Monaghan	148	159	83	6	30	426
Offaly	282	251	259	22	86	900
Roscommon	137	191	37	1	45	411
Sligo	226	342	72	9	59	708
South Dublin	18	198	1,532	200	191	2,139
Tipperary N.R.	416	454	176	36	50	1,132
Tipperary S.R.	114	193	140	41	33	521
Waterford	191	113	125	14	631	1,074
Westmeath	346	478	618	4	132	1,578
Wexford	857	559	740	108	168	2,432
Wicklow	400	482	416	54	132	1,484
County Boroughs						
Cork	46	71	405	134	530	1,186
Dublin	4	32	197	6	2,123	2,362
Galway	13	71	406	25	601	1,116
Limerick	21	327	546	67	273	1,234
Waterford	13	18	89	3	195	318
TOTALS	9,070	14,828	14,470	2,158	8,886	49,412

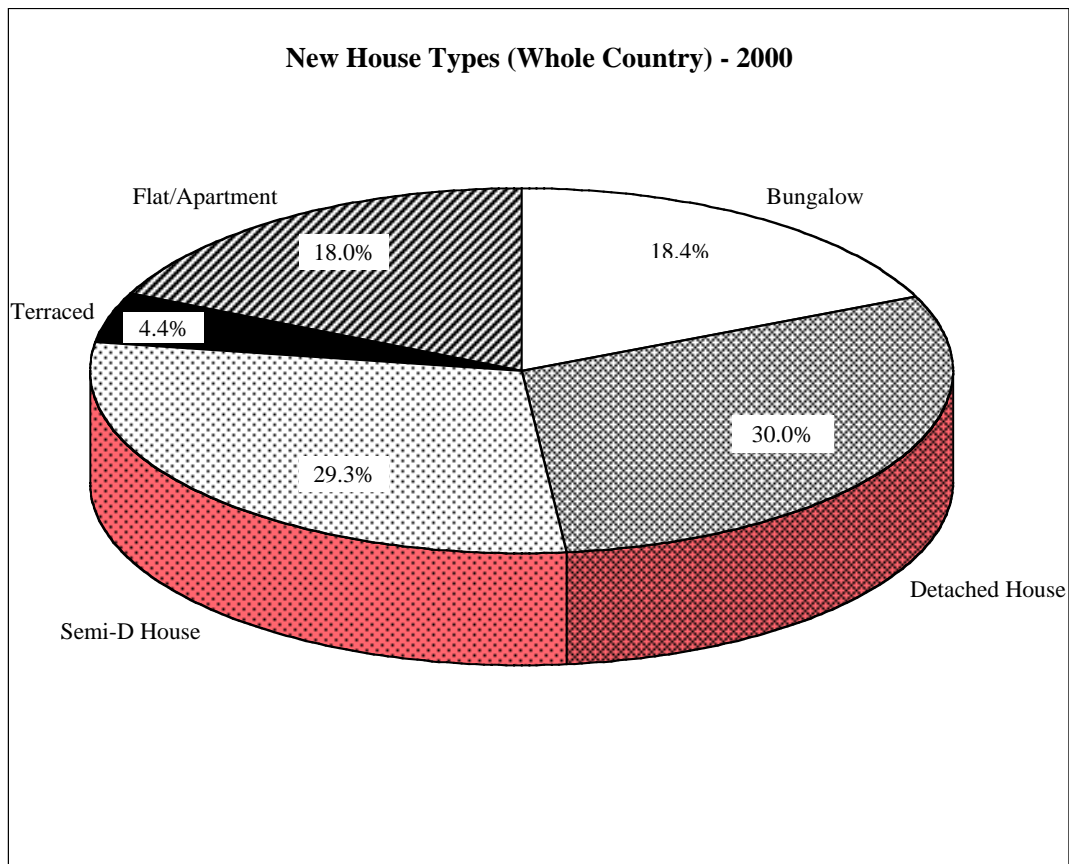
Footnotes:- (a) County Council areas include Boroughs and Urban Districts.

(b) These data are based on the number of new dwellings connected by the ESB to the electricity supply but exclude conversions which are included on page 12.

HOUSE COMPLETIONS

NEW HOUSES COMPLETED (PERCENTAGES) BY TYPE 1996 - 2000

Year	Bungalow	House Detached	House Semi-D	House Terraced	Flat / Apartment
Percentages	%	%	%	%	%
1996	20.0	25.8	30.0	4.2	20.0
1997	19.4	24.8	32.5	4.2	19.1
1998	17.5	23.0	34.2	3.5	21.8
1999	17.8	28.1	30.4	3.7	19.9
2000	18.4	30.0	29.3	4.4	18.0



Footnote:- These data are based on the number of new dwellings connected by the ESB to the electricity supply.

PART II - HOUSING LOANS

LOAN APPROVALS AND PAYMENTS - ALL AGENCIES

(BUILDING SOCIETIES, BANKS AND OTHER AGENCIES, LOCAL AUTHORITIES)

LOANS APPROVED

Year and Quarter	New Houses			Other Houses			Totals Number	Totals Value £m	Year and Quarter
	Number	Value £m	Value _m	Number	Value £m	Value _m			
1996	26,598	1306.7	1659.2	34,408	1589.2	2017.9	61,006	2895.9	1996
1997	30,671	1700.0	2158.6	33,981	1784.3	2265.6	64,652	3484.3	1997
1998	29,220	1936.6	2459.0	39,705	2517.1	3196.1	68,925	4453.6	1998
1999	32,722	2593.8	3293.4	45,850	3464.7	4399.3	78,572	6058.5	1999
2000	33,289	2934.6	3726.2	47,567	4156.3	5277.4	80,856	7091.0	2000
1999									
QI	8,064	601.8	764.1	10,366	712.8	905.1	18,430	1314.6	1999 QI
QII	8,662	661.2	839.6	12,274	887.1	1126.4	20,936	1548.4	1999 QII
QIII	8,348	688.8	874.6	12,319	972.7	1235.1	20,667	1661.5	1999 QIII
QIV	7,648	642.0	815.2	10,891	892.0	1132.6	18,539	1534.0	1999 QIV
2000									
QI	8,388	729.0	925.6	10,986	906.0	1150.4	19,374	1635.0	2000 QI
QII	8,930	794.4	1008.7	12,368	1095.4	1390.9	21,298	1889.8	2000 QII
QIII	8,130	702.1	891.5	12,942	1146.5	1455.8	21,072	1848.6	2000 QIII
QIV	7,841	709.1	900.4	11,271	1008.4	1280.4	19,112	1717.5	2000 QIV

LOANS PAID

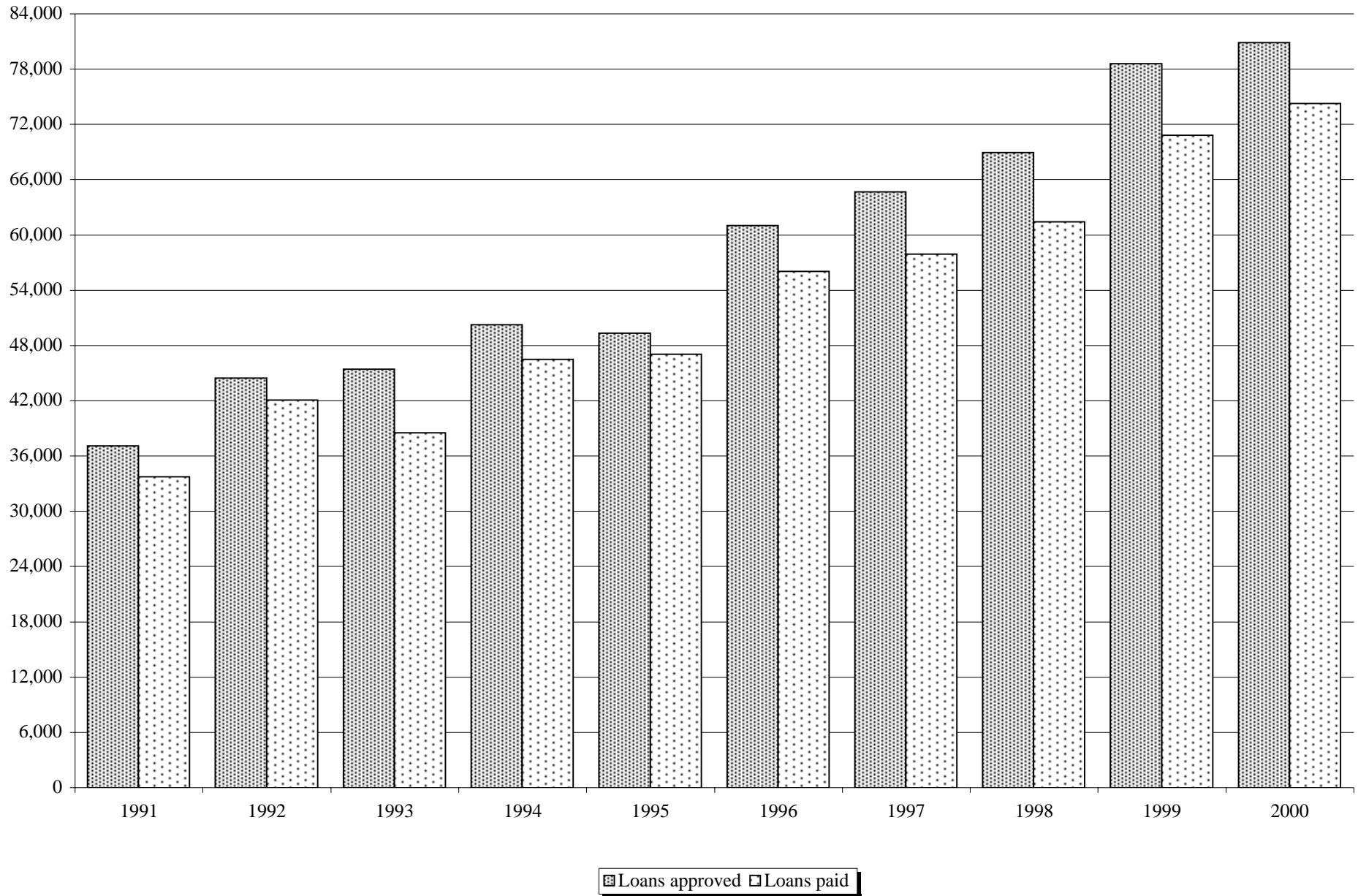
Year and Quarter	New Houses			Other Houses			Totals Number	Totals Value £m	Year and Quarter
	Number	Value £m	Value _m	Number	Value £m	Value _m			
1996	25,628	1017.2	1291.6	30,381	1313.7	1668.1	56,009	2330.9	1996
1997	28,193	1335.3	1695.5	29,708	1491.3	1893.6	57,901	2826.6	1997
1998	27,355	1549.3	1967.2	34,052	2063.3	2619.9	61,407	3612.6	1998
1999	31,359	2186.9	2776.8	39,458	2945.6	3740.1	70,817	5132.5	1999
2000	31,533	2436.4	3093.6	42,725	3547.7	4504.6	74,258	5984.1	2000
1999									
QI	7,121	452.1	574.0	7,798	546.8	694.3	14,919	998.9	1999 QI
QII	8,276	534.3	678.4	10,026	719.5	913.6	18,302	1253.8	1999 QII
QIII	8,283	589.1	748.0	10,814	827.0	1050.1	19,097	1416.1	1999 QIII
QIV	7,679	611.4	776.3	10,820	852.3	1082.2	18,499	1463.7	1999 QIV
2000									
QI	7,463	544.1	690.9	8,845	723.1	918.1	16,308	1267.2	2000 QI
QII	7,997	605.2	768.4	10,583	838.4	1064.5	18,580	1443.6	2000 QII
QIII	8,272	644.2	818.0	12,065	997.2	1266.2	20,337	1641.4	2000 QIII
QIV	7,801	642.9	816.3	11,232	989.0	1255.8	19,033	1631.9	2000 QIV

Note

In recent years due to the developments in the mortgage market these data contained an unquantified element of refinancing of existing mortgages (e.g. involving the redemption of an existing mortgage and its replacement with a mortgage from a different lender). Steps are being taken by the Department with the co-operation of the mortgage lenders to endeavour to exclude such refinancing loans.

* Excludes

NUMBER OF LOANS APPROVED AND PAID BY ALL LENDING AGENCIES



* BUILDING SOCIETIES

LOANS APPROVED

Number	New Houses		Other Houses			Totals		Year and Quarter	Number	
	Value £m	Value _m	Number	Value £m	Value _m	Number	Value £m			
6,269	326.1	414.1	7,335	357.3	453.7	13,604	683.4	867.7	1996	20,217
8,326	484.2	614.8	8,812	487.8	619.4	17,138	972.0	1234.2	1997	22,277
7,237	506.1	642.6	9,084	626.3	795.2	16,321	1132.3	1437.7	1998	21,932
6,909	574.0	728.8	9,517	723.8	919.0	16,426	1297.7	1647.7	1999	25,779
7,648	675.1	857.2	10,053	814.2	1033.8	17,701	1489.3	1891.0	2000	25,581
									1999	
1,780	142.7	181.2	2,349	164.7	209.1	4,129	307.4	390.3	QI	6,273
1,761	143.9	182.7	2,505	185.6	235.7	4,266	329.5	418.4	QII	6,890
1,899	156.1	198.2	2,588	200.1	254.1	4,487	356.1	452.2	QIII	6,441
1,469	131.2	166.6	2,075	173.4	220.2	3,544	304.7	386.9	QIV	6,175
									2000	
1,832	169.6	215.3	2,208	165.2	209.8	4,040	334.8	425.1	QI	6,549
1,890	165.9	210.6	2,456	200.8	255.0	4,346	366.7	465.6	QII	7,031
1,921	163.0	207.0	2,768	230.9	293.2	4,689	393.9	500.1	QIII	6,194
2,005	176.6	224.2	2,621	217.3	275.9	4,626	393.9	500.1	QIV	5,807

LOANS PAID

Number	New Houses		Other Houses			Totals		Year and Quarter	Number	
	Value £m	Value _m	Number	Value £m	Value _m	Number	Value £m			
6,397	244.5	310.5	7,192	300.7	381.8	13,589	545.2	692.3	1996	19,050
8,427	379.8	482.2	7,617	402.9	511.6	16,044	782.7	993.8	1997	19,655
7,702	435.9	553.5	8,267	538.2	683.4	15,969	974.2	1237.0	1998	19,562
8,582	622.9	790.9	8,290	719.1	913.1	16,872	1342.0	1704.0	1999	22,713
6,994	537.4	682.4	8,821	761.8	967.3	15,815	1299.2	1649.6	2000	24,487
									1999	
1,875	136.7	173.6	1,760	141.3	179.4	3,635	278.0	353.0	QI	5,229
2,443	155.1	196.9	2,362	194.8	247.3	4,805	349.8	444.2	QII	5,817
2,096	155.4	197.3	2,132	193.4	245.6	4,228	348.9	443.0	QIII	6,175
2,168	175.7	223.1	2,036	189.6	240.7	4,204	365.3	463.8	QIV	5,492
									2000	
1,566	116.9	148.4	1,862	184.2	233.9	3,428	301.1	382.3	QI	5,890
1,728	131.3	166.7	2,053	162.6	206.5	3,781	293.8	373.0	QII	6,257
1,829	141.3	179.4	2,481	205.5	260.9	4,310	346.8	440.3	QIII	6,424
1,871	148.0	187.9	2,425	209.5	266.0	4,296	357.5	453.9	QIV	5,916

Irish Permanent plc. and First Active plc.- See note on page 7.

* Includes Irish Permai

* BANKS AND OTHER AGENCIES

LOANS APPROVED

New Houses	Other Houses				Totals		Year and		New Ho	
Value £m	Value _m	Number	Value £m	Value _m	Number	Value £m	Value _m	Quarter	Number	Value £m
977.6	1241.3	26,872	1227.1	1558.1	47,089	2204.7	2799.4	1996	112	3.0
1213.8	1541.2	25,012	1292.8	1641.5	47,289	2506.6	3182.7	1997	68	2.0
1429.1	1814.6	30,499	1887.2	2396.2	52,431	3316.3	4210.8	1998	51	1.4
2018.6	2563.1	36,255	2738.3	3476.9	62,034	4756.9	6040.0	1999	34	1.3
2256.4	2865.0	37,418	3337.8	4238.1	62,999	5594.2	7103.2	2000	60	3.2
								1999		
458.7	582.4	8,002	547.8	695.6	14,275	1006.4	1277.9	QI	11	0.4
516.9	656.3	9,755	701.0	890.1	16,645	1217.9	1546.4	QII	11	0.4
532.4	676.0	9,705	771.8	980.0	16,146	1304.1	1655.9	QIII	8	0.3
510.6	648.3	8,793	717.8	911.4	14,968	1228.4	1559.7	QIV	4	0.1
								2000		
559.1	709.9	8,761	740.2	939.9	15,310	1299.3	1649.8	QI	7	0.3
628.2	797.6	9,900	894.2	1135.4	16,931	1522.4	1933.0	QII	9	0.3
538.3	683.5	10,140	914.1	1160.7	16,334	1452.4	1844.2	QIII	15	0.9
530.8	674.0	8,617	789.3	1002.2	14,424	1320.1	1676.2	QIV	29	1.7

LOANS PAID

New Houses	Other Houses				Totals		Year and		New Ho	
Value £m	Value _m	Number	Value £m	Value _m	Number	Value £m	Value _m	Quarter	Number	Value £m
769.7	977.3	22,994	1008.5	1280.5	42,044	1778.2	2257.8	1996	181	3.0
953.3	1210.4	21,943	1084.8	1377.4	41,598	2038.2	2588.0	1997	111	2.1
1111.5	1411.3	25,665	1522.0	1932.5	45,227	2633.6	3344.0	1998	91	1.8
1562.6	1984.1	31,091	2224.0	2823.9	53,804	3786.6	4808.0	1999	64	1.4
1897.7	2409.6	33,843	2783.5	3534.3	58,330	4681.1	5943.8	2000	52	1.3
								1999		
314.9	399.8	6,020	404.8	514.0	11,249	719.7	913.8	QI	17	0.4
378.9	481.1	7,644	524.3	665.7	13,461	903.2	1146.8	QII	16	0.4
433.4	550.3	8,667	633.0	803.7	14,842	1066.4	1354.0	QIII	12	0.2
435.4	552.8	8,760	661.9	840.4	14,252	1097.3	1393.3	QIV	19	0.4
								2000		
427.0	542.2	6,970	538.4	683.6	12,860	965.4	1225.8	QI	7	0.2
473.7	601.5	8,516	675.3	857.5	14,773	1149.0	1458.9	QII	12	0.2
502.4	637.9	9,564	791.0	1004.4	15,988	1293.4	1642.3	QIII	19	0.5
494.5	627.9	8,793	778.7	988.7	14,709	1273.2	1616.6	QIV	14	0.5

ment plc. and First Active plc.- See note on page 7.

APPROVALS AND PAYMENTS - LOCAL AUTHORITIES

LOCAL AUTHORITIES

LOANS APPROVED

Houses	Other Houses			Totals		
	Value _m	Number	Value £m	Value _m	Number	Value £m
3.8	201	4.8	6.1	313	7.8	9.9
2.5	157	3.7	4.7	225	5.7	7.2
1.8	122	3.6	4.6	173	4.9	6.2
1.7	78	2.6	3.3	112	3.9	5.0
4.1	96	4.3	5.5	156	7.5	9.5
0.5	15	0.4	0.5	26	0.8	1.0
0.5	14	0.5	0.6	25	0.9	1.1
0.4	26	0.9	1.1	34	1.2	1.5
0.1	23	0.8	1.0	27	0.9	1.1
0.4	17	0.6	0.8	24	0.9	1.1
0.4	12	0.4	0.5	21	0.8	1.0
1.1	34	1.5	1.9	49	2.4	3.0
2.2	33	1.8	2.3	62	3.5	4.4

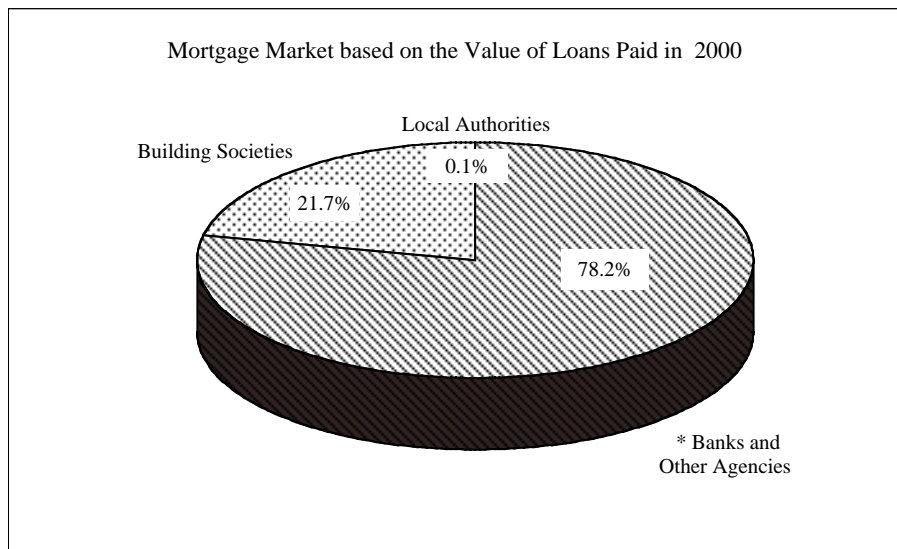
LOANS PAID

Houses	Other Houses			Totals		
	Value _m	Number	Value £m	Value _m	Number	Value £m
3.8	195	4.5	5.7	376	7.5	9.5
2.7	148	3.5	4.4	259	5.7	7.2
2.3	120	3.0	3.8	211	4.8	6.1
1.8	77	2.5	3.2	141	3.9	5.0
1.7	61	2.4	3.0	113	3.7	4.7
0.5	18	0.7	0.9	35	1.1	1.4
0.5	20	0.5	0.6	36	0.9	1.1
0.3	15	0.6	0.8	27	0.8	1.0
0.5	24	0.8	1.0	43	1.1	1.4
0.3	13	0.5	0.6	20	0.7	0.9
0.3	14	0.5	0.6	26	0.7	0.9
0.6	20	0.7	0.9	39	1.2	1.5
0.6	14	0.7	0.9	28	1.1	1.4

PERCENTAGE SHARE OF MORTGAGE MARKET BASED ON THE VALUE OF LOANS PAID

PERCENTAGES

Year and Quarter	Building Societies	* Banks and Other Agencies	Local Authorities
1996	23.4	76.3	0.3
1997	27.7	72.1	0.2
1998	27.0	72.9	0.1
1999	26.1	73.8	0.1
2000	21.7	78.2	0.1
1999			
QI	27.8	72.1	0.1
QII	27.9	72.0	0.1
QIII	24.6	75.3	0.1
QIV	25.0	75.0	0.1
2000			
QI	23.8	76.2	0.1
QII	20.4	79.6	0.0
QIII	21.1	78.8	0.1
QIV	21.9	78.0	0.1



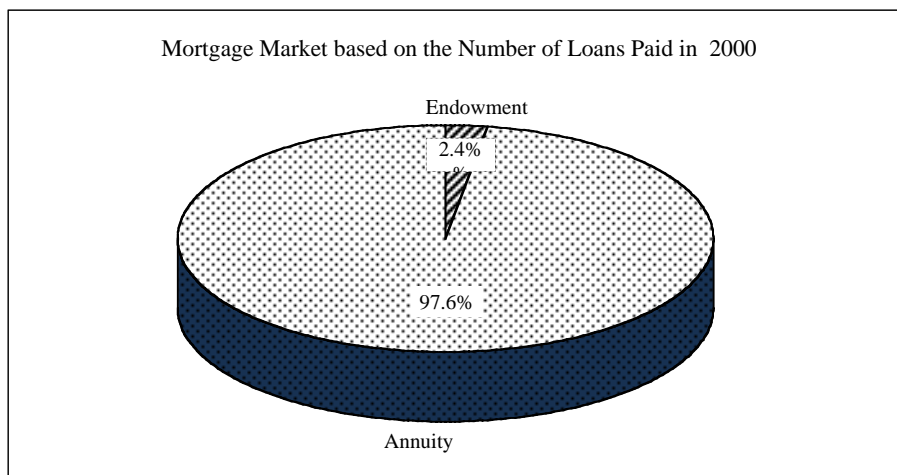
* Includes Irish Permanent plc. and First Active plc. - See note on page 7.

LOANS APPROVED

Year and Quarter	Annuity		Endowment	
	Number	%	Number	%
1996	57,905	94.9	3,101	5.1
1997	62,510	96.7	2,142	3.3
1998	67,082	97.3	1,843	2.7
1999	76,518	97.4	2,054	2.6
2000	79,034	97.7	1,822	2.3
1999				
QI	17,950	97.4	480	2.6
QII	20,397	97.4	539	2.6
QIII	20,175	97.6	492	2.4
QIV	17,996	97.1	543	2.9
2000				
QI	18,908	97.6	466	2.4
QII	20,799	97.7	499	2.3
QIII	20,557	97.6	515	2.4
QIV	18,770	98.2	342	1.8

LOANS PAID

Year and Quarter	Annuity		Endowment	
	Number	%	Number	%
1996	53,292	95.1	2,717	4.9
1997	55,783	96.3	2,118	3.7
1998	59,616	97.1	1,791	2.9
1999	68,941	97.4	1,876	2.6
2000	72,468	97.6	1,790	2.4
1999				
QI	14,517	97.3	402	2.7
QII	17,821	97.4	481	2.6
QIII	18,602	97.4	495	2.6
QIV	18,001	97.3	498	2.7
2000				
QI	15,918	97.6	390	2.4
QII	18,145	97.7	435	2.3
QIII	19,810	97.4	527	2.6
QIV	18,595	97.7	438	2.3



BREAKDOWN OF MORTGAGE MARKET BY FIXED AND VARIABLE INTEREST RATE MORTGAGES

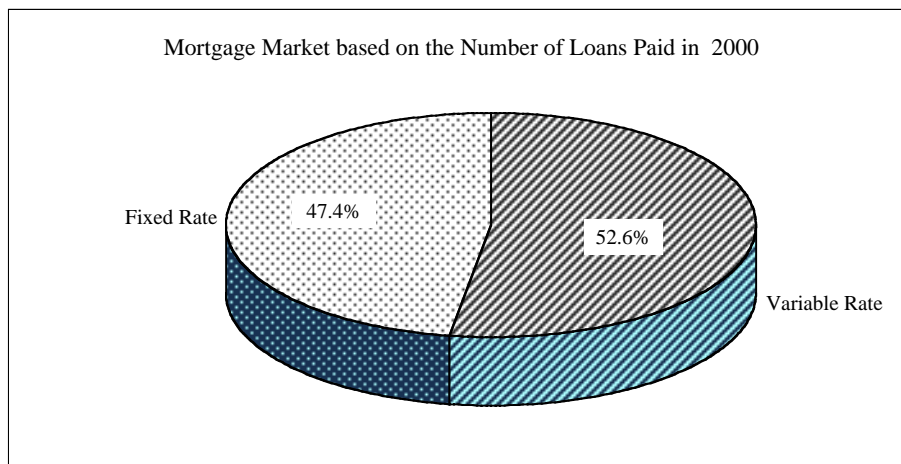
LOANS APPROVED

Year and Quarter	Fixed Rate		Variable Rate	
	Number	%	Number	%
1996	33,603	55.1	27,403	44.9
1997	42,130	65.2	22,522	34.8
1998	47,491	68.9	21,434	31.1
1999	53,437	68.0	25,135	32.0
2000	37,512	46.4	43,344	53.6
1999				
QI	12,410	67.3	6,020	32.7
QII	15,244	72.8	5,692	27.2
QIII	15,479	74.9	5,188	25.1
QIV	10,304	55.6	8,235	44.4
2000				
QI	8,732	45.1	10,642	54.9
QII	8,768	41.2	12,530	58.8
QIII	10,310	48.9	10,762	51.1
QIV	9,702	50.8	9,410	49.2

LOANS PAID

Year and Quarter	Fixed Rate		Variable Rate	
	Number	%	Number	%
1996	31,537	56.3	24,472	43.7
1997	38,876	67.1	19,025	32.9
1998	41,447	67.5	19,960	32.5
1999	48,890	69.0	21,927	31.0
2000	35,208	47.4	39,050	52.6
1999				
QI	10,073	67.5	4,846	32.5
QII	12,350	67.5	5,952	32.5
QIII	14,179	74.2	4,918	25.8
QIV	12,288	66.4	6,211	33.6
2000				
QI	8,799	54.0	7,509	46.0
QII	8,162	43.9	10,418	56.1
QIII	9,058	44.5	11,279	55.5
QIV	9,189	48.3	9,844	51.7

Footnote:- The figures on fixed interest rate mortgages relate to mortgages which provide that the rate of interest may not be changed, or may only be changed at intervals of not less than one year.



ANALYSIS OF LOAN APPROVALS *
RANGES OF LOANS PAID - DUBLIN AREA

Year	Not exceeding £55,000 (<i>_69,836</i>)	£55,001to £75,000 (<i>_69,837 to _95,230</i>)	£75,001to £100,000 (<i>_95,231 to _126,974</i>)	£100,001to £150,000 (<i>_126,975 to _190,461</i>)	Exceeding £150,000 (<i>_190,461</i>)
Percentages	%	%	%	%	%

NEW HOUSES

1996	62.4	29.0	5.6	2.4	0.7
1997	38.2	37.0	18.2	4.9	1.7
1998	22.0	33.9	32.1	9.6	2.4
1999	17.0	13.8	31.4	30.7	7.1
2000	15.5	8.6	17.8	46.1	12.0

SECOND - HAND

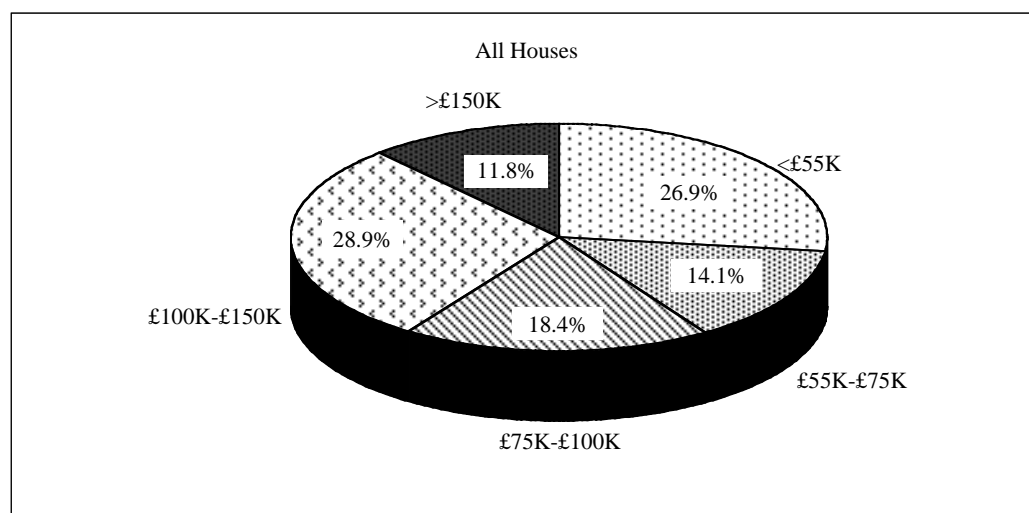
HOUSES

1996	71.7	18.1	5.8	3.4	0.9
1997	52.3	21.1	14.7	8.6	3.3
1998	45.6	23.0	17.9	10.1	3.4
1999	35.8	19.6	20.7	17.1	6.7
2000	29.4	15.3	18.5	25.0	11.8

ALL HOUSES

1996	68.6	21.8	5.7	3.1	0.8
1997	47.2	26.8	15.9	7.3	2.8
1998	39.1	26.1	21.8	9.9	3.1
1999	32.3	18.4	22.8	19.7	6.8
2000	26.9	14.1	18.4	28.9	11.8

* See note on page 9.



ANALYSIS OF LOAN APPROVALS *

RANGES OF LOANS PAID - WHOLE COUNTRY

Year	Not exceeding £55,000 (<i>_69,836</i>)	£55,001to £75,000 (<i>_69,837 to _95,230</i>)	£75,001to £100,000 (<i>_95,231 to _126,974</i>)	£100,001to £150,000 (<i>_126,975 to _190,461</i>)	Exceeding £150,000 (<i>_190,461</i>)
Percentages	%	%	%	%	%

NEW HOUSES

1996	76.0	19.2	3.6	1.0	0.3
1997	57.4	28.2	11.0	2.6	0.7
1998	46.1	29.8	17.7	5.3	1.1
1999	37.2	26.3	21.8	12.0	2.7
2000	31.3	21.6	24.3	18.9	3.8

SECOND - HAND

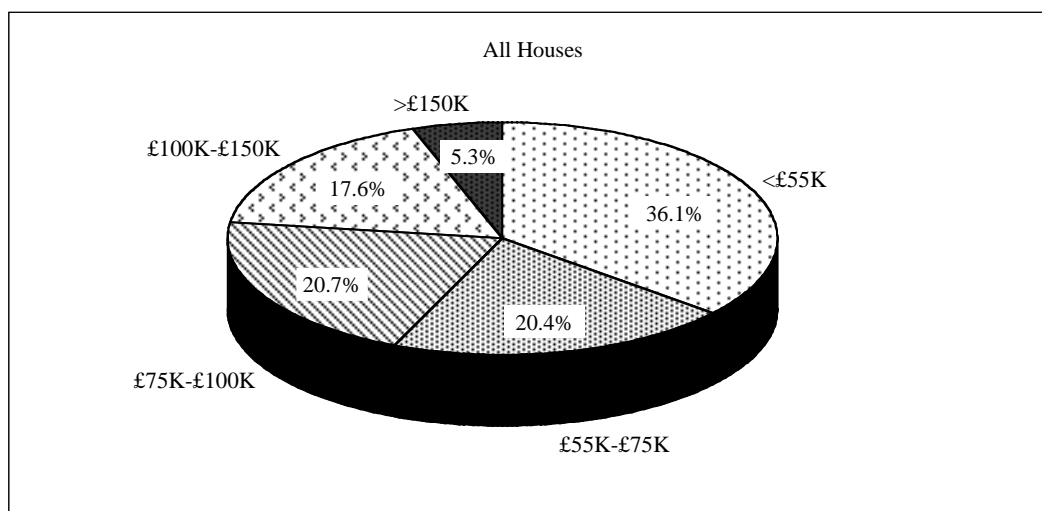
HOUSES

1996	81.0	12.6	4.0	1.9	0.5
1997	64.8	18.7	9.9	4.9	1.7
1998	58.7	20.9	12.5	6.2	1.8
1999	47.7	21.3	16.7	10.5	3.8
2000	38.6	19.7	18.8	16.8	6.1

ALL HOUSES

1996	78.9	15.3	3.8	1.6	0.4
1997	61.5	23.0	10.4	3.9	1.3
1998	53.9	24.2	14.5	5.9	1.5
1999	44.3	22.9	18.4	11.0	3.4
2000	36.1	20.4	20.7	17.6	5.3

* See note on page 9.



PART III - PROFILE OF BORROWERS

ANALYSIS OF LOAN APPROVALS *

PREVIOUS TENURE OF BORROWERS - DUBLIN AREA

Year	Owner Occupied	Tenant (Private)	Tenant (Local Authority)	Parents' Residence	Other
Percentages	%	%	%	%	%
NEW HOUSES					
1996	43.7	24.9	1.0	27.4	3.0
1997	50.2	22.8	1.1	23.7	2.2
1998	43.5	24.4	0.8	29.4	1.9
1999	46.8	22.2	0.9	28.0	2.0
2000	42.3	29.2	0.4	26.5	1.6
SECOND - HAND HOUSES					
1996	56.5	18.5	2.7	18.6	3.8
1997	61.9	18.1	1.8	15.6	2.5
1998	62.1	16.7	1.0	18.6	1.6
1999	63.1	17.7	1.2	16.3	1.7
2000	65.1	17.6	0.8	13.9	2.6
ALL HOUSES					
1996	52.0	20.6	2.2	21.7	3.6
1997	57.7	19.8	1.6	18.5	2.4
1998	56.5	19.1	0.9	21.9	1.7
1999	58.7	18.9	1.2	19.4	1.8
2000	58.6	20.9	0.7	17.5	2.3

* See note on page 9.

ANALYSIS OF LOAN APPROVALS *

PREVIOUS TENURE OF BORROWERS - WHOLE COUNTRY

Year	Owner Occupied	Tenant (Private)	Tenant (Local Authority)	Parents' Residence	Other
Percentages	%	%	%	%	%

NEW HOUSES

1996	46.4	22.8	1.1	27.3	2.4
1997	52.6	22.9	1.1	21.4	2.0
1998	50.1	23.4	0.7	23.8	1.9
1999	46.1	25.1	0.7	26.0	2.1
2000	46.5	25.3	0.6	25.3	2.2

SECOND - HAND HOUSES

1996	60.3	16.5	3.3	17.2	2.7
1997	65.0	16.8	1.7	14.2	2.3
1998	65.8	16.0	1.2	15.4	1.6
1999	64.5	18.2	1.2	14.4	1.7
2000	64.9	18.2	1.0	13.4	2.5

ALL HOUSES

1996	54.6	19.0	2.4	21.4	2.6
1997	59.5	19.5	1.4	17.5	2.1
1998	58.7	19.3	0.9	19.3	1.8
1999	56.3	21.3	1.0	19.6	1.9
2000	56.1	21.6	0.8	19.1	2.4

* See note on page 9.

ANALYSIS OF LOAN APPROVALS *

MARITAL STATUS OF BORROWERS - DUBLIN AREA

Year	Single	Single / about to marry	Married ≤ 5 years	Married >5 years	Widowed Separated etc.
Percentages	%	%	%	%	%

NEW HOUSES

1996	38.3	17.4	14.3	26.4	3.6
1997	40.0	10.7	14.7	30.5	4.1
1998	43.0	14.3	15.1	23.4	4.2
1999	61.0	8.1	13.0	12.2	5.7
2000	66.5	6.8	10.7	12.3	3.6

SECOND - HAND
HOUSES

1996	30.7	7.6	15.6	40.1	6.1
1997	32.6	5.7	14.1	40.9	6.8
1998	37.7	7.0	11.9	37.1	6.3
1999	55.2	3.7	8.3	20.1	12.6
2000	62.1	3.0	7.5	17.2	10.3

ALL HOUSES

1996	33.2	11.1	15.2	35.3	5.2
1997	35.2	7.5	14.3	37.2	5.8
1998	39.6	9.2	12.7	33.0	5.6
1999	56.6	4.8	9.4	18.3	11.0
2000	63.1	3.9	8.2	16.1	8.8

* See note on page 9.

ANALYSIS OF LOAN APPROVALS *

MARITAL STATUS OF BORROWERS - WHOLE COUNTRY

Year	Single	Single / about to marry	Married ≤ 5 years	Married >5 years	Widowed Separated etc.
Percentages	%	%	%	%	%

NEW HOUSES

1996	30.8	15.4	19.9	30.9	3.0
1997	31.5	11.4	17.9	36.3	2.9
1998	32.5	12.4	19.9	32.7	2.4
1999	55.0	8.0	13.3	18.2	5.5
2000	59.0	8.0	12.4	16.7	3.9

SECOND - HAND
HOUSES

1996	26.2	7.7	15.5	45.4	5.2
1997	28.0	5.7	13.8	46.3	6.3
1998	30.2	6.4	13.3	44.5	5.7
1999	54.5	3.2	8.0	21.5	12.7
2000	60.2	2.9	7.2	19.1	10.7

ALL HOUSES

1996	28.0	10.9	17.3	39.4	4.3
1997	29.5	8.3	15.6	41.8	4.8
1998	31.3	9.1	16.1	39.2	4.3
1999	54.7	5.1	10.1	20.2	9.9
2000	59.7	5.0	9.3	18.1	7.9

* See note on page 9.

ANALYSIS OF LOAN APPROVALS *

RANGES OF INCOME OF BORROWERS - DUBLIN AREA

Year	Not exceeding £20,000 (<i>_25,395</i>)	£20,001to £25,000 (<i>_25,396 to _31,743</i>)	£25,001to £30,000 (<i>_31,744 to _38,092</i>)	£30,001to £35,000 (<i>_38,093 to _44,441</i>)	£35,001to £40,000 (<i>_44,442 to _50,790</i>)	£40,001to £50,000 (<i>_50,791 to _63,487</i>)	Exceeding £50,000 (<i>_63,487</i>)
Percentages	%	%	%	%	%	%	%
NEW HOUSES							
Based on Principal Income only							
1996	42.6	20.4	10.5	5.3	5.1	7.4	8.7
1997	18.3	22.2	17.0	13.5	12.1	10.4	6.4
1998	26.9	18.1	15.7	14.5	10.0	8.2	6.7
1999	17.0	18.0	18.8	16.6	11.2	10.7	7.7
2000	9.9	15.8	20.3	19.2	12.4	10.1	12.3
Based on Combined Incomes of Borrowers							
1996	4.6	13.4	22.3	16.8	17.0	13.7	12.2
1997	2.2	5.0	16.8	17.8	18.8	20.6	18.8
1998	2.7	5.9	18.5	24.2	25.1	18.7	5.0
1999	0.6	1.3	3.6	9.1	10.3	29.2	45.8
2000	0.3	0.7	1.7	5.5	11.3	22.7	57.8
SECOND - HAND HOUSES							
Based on Principal Income only							
1996	45.1	17.3	11.0	5.5	5.9	7.0	8.3
1997	25.4	16.9	14.5	16.7	12.2	8.4	5.8
1998	27.3	14.5	13.7	13.6	10.6	9.7	10.5
1999	23.4	17.9	16.7	12.3	9.8	9.4	10.5
2000	20.0	17.5	16.9	12.6	10.2	10.6	12.3
Based on Combined Incomes of Borrowers							
1996	10.9	11.7	17.0	17.5	11.0	14.9	17.1
1997	8.5	12.0	17.6	18.9	17.4	16.5	9.1
1998	3.4	11.6	16.7	21.1	21.6	18.1	7.4
1999	3.1	5.5	9.2	11.5	10.3	22.4	37.8
2000	1.7	3.3	7.0	10.2	11.5	21.9	44.4
ALL HOUSES							
Based on Principal Income only							
1996	44.2	18.4	10.8	5.4	5.6	7.1	8.5
1997	23.0	18.6	15.3	15.8	12.2	9.1	6.0
1998	27.2	15.8	14.3	13.8	10.4	9.2	9.3
1999	22.1	17.9	17.1	13.2	10.1	9.6	9.9
2000	18.0	17.1	17.5	13.9	10.6	10.5	12.3
Based on Combined Incomes of Borrowers							
1996	8.5	12.2	19.0	17.3	13.1	14.4	15.4
1997	5.7	8.5	17.2	18.3	17.9	18.3	14.1
1998	3.3	10.0	16.9	21.9	22.8	18.3	6.7
1999	2.6	4.6	8.0	11.0	10.3	23.9	39.5
2000	1.4	2.8	6.0	9.3	11.4	22.1	47.0

* See note on page 9.

ANALYSIS OF LOAN APPROVALS *

RANGES OF INCOME OF BORROWERS - WHOLE COUNTRY

Year	Not exceeding £20,000 (<i>_25,395</i>)	£20,001to £25,000 (<i>_25,396 to _31,743</i>)	£25,001to £30,000 (<i>_31,744 to _38,092</i>)	£30,001to £35,000 (<i>_38,093 to _44,441</i>)	£35,001to £40,000 (<i>_44,442 to _50,790</i>)	£40,001to £50,000 (<i>_50,791 to _63,487</i>)	Exceeding £50,000 (<i>_63,487</i>)
Percentages	%	%	%	%	%	%	%
NEW HOUSES							
Based on Principal Income only							
1996	44.7	24.1	12.1	5.1	4.6	4.4	5.1
1997	34.5	21.3	12.5	10.7	8.7	6.4	5.9
1998	30.0	18.6	15.6	12.6	8.3	7.1	7.8
1999	32.3	22.3	18.2	11.0	6.8	5.4	4.0
2000	28.0	22.1	19.5	11.5	7.4	5.9	5.5
Based on Combined Incomes of Borrowers							
1996	10.8	20.6	22.6	14.8	13.4	11.5	6.3
1997	5.8	11.0	17.6	17.7	15.1	17.9	14.9
1998	2.6	14.6	20.5	22.3	21.2	15.4	3.4
1999	2.9	6.6	12.0	15.3	14.0	24.2	25.0
2000	1.7	4.2	9.9	15.5	15.5	23.7	29.5
SECOND - HAND HOUSES							
Based on Principal Income only							
1996	47.4	21.7	10.8	4.9	4.1	5.4	5.7
1997	38.7	15.0	12.8	11.3	6.5	5.9	9.9
1998	34.1	15.2	11.8	12.9	9.1	8.3	8.4
1999	33.7	18.9	16.3	9.9	7.4	7.1	6.7
2000	30.2	19.3	16.6	10.5	8.2	7.5	7.8
Based on Combined Incomes of Borrowers							
1996	17.6	16.2	18.6	13.3	10.0	12.3	12.0
1997	10.9	11.5	14.6	13.1	11.7	17.0	21.2
1998	5.5	12.6	19.3	22.1	19.0	18.2	3.3
1999	5.9	8.7	12.6	13.7	11.9	19.7	27.5
2000	3.5	6.4	10.8	13.6	12.8	20.7	32.1
ALL HOUSES							
Based on Principal Income only							
1996	46.3	22.6	11.3	5.0	4.3	5.0	5.5
1997	36.8	17.7	12.7	11.0	7.5	6.1	8.2
1998	32.7	16.5	13.2	12.9	8.9	7.8	8.1
1999	33.2	20.2	17.0	10.3	7.2	6.5	5.7
2000	29.4	20.3	17.7	10.9	7.9	6.9	6.9
Based on Combined Incomes of Borrowers							
1996	14.5	18.2	20.4	14.0	11.5	11.9	9.4
1997	8.5	11.2	16.0	15.3	13.3	17.5	18.1
1998	4.5	13.7	19.5	22.2	19.8	17.0	3.3
1999	4.8	7.9	12.3	14.3	12.7	21.3	26.6
2000	2.8	5.6	10.5	14.3	13.8	21.9	31.1

* See note on page 9.

ANALYSIS OF LOAN APPROVALS *

OCCUPATION OF BORROWERS

CATEGORIES OF OCCUPATION

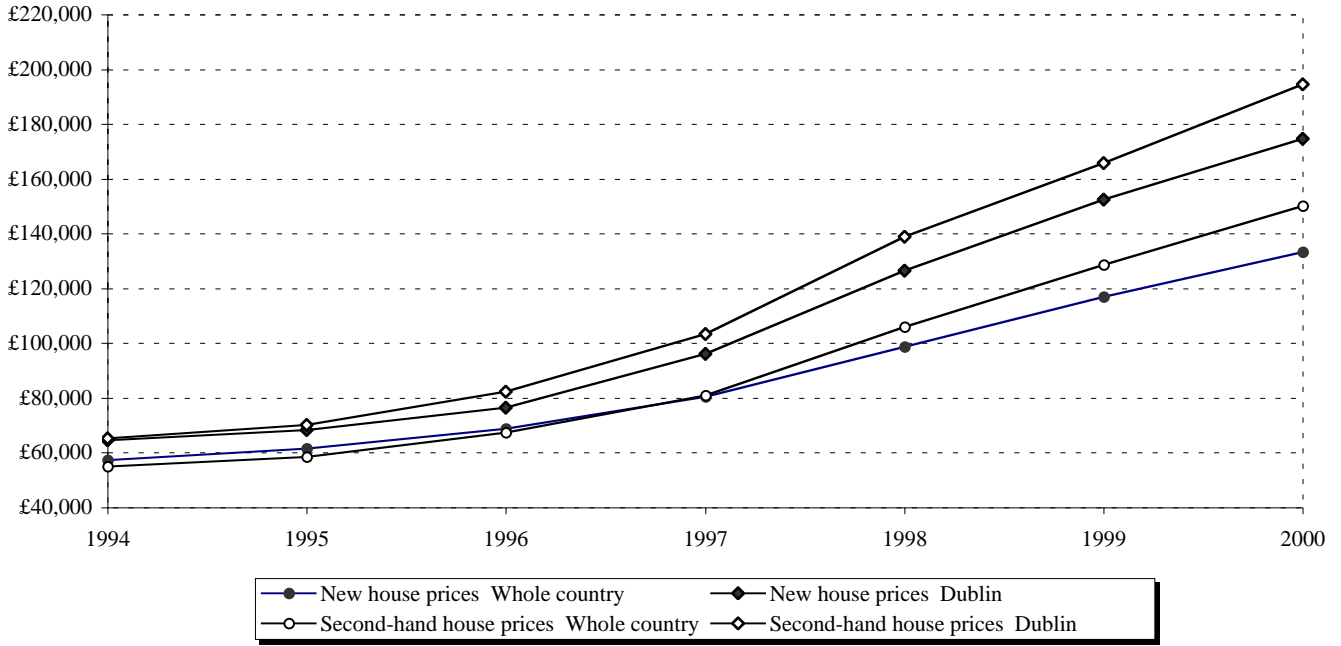
NEW AND SECOND-HAND HOUSES

Year	Professional; Managerial; Employer	Salaried; Non-manual	Skilled; Semi-skilled Manual	Unskilled; Manual	Farmer; Fisherman
Percentages	%	%	%	%	%
1996	44.3	23.3	23.2	6.4	2.8
1997	52.2	19.5	20.3	4.4	3.7
1998	52.9	22.0	19.9	3.4	1.8
1999	48.5	15.4	26.2	9.4	0.6
2000	48.3	13.0	28.8	9.2	0.6

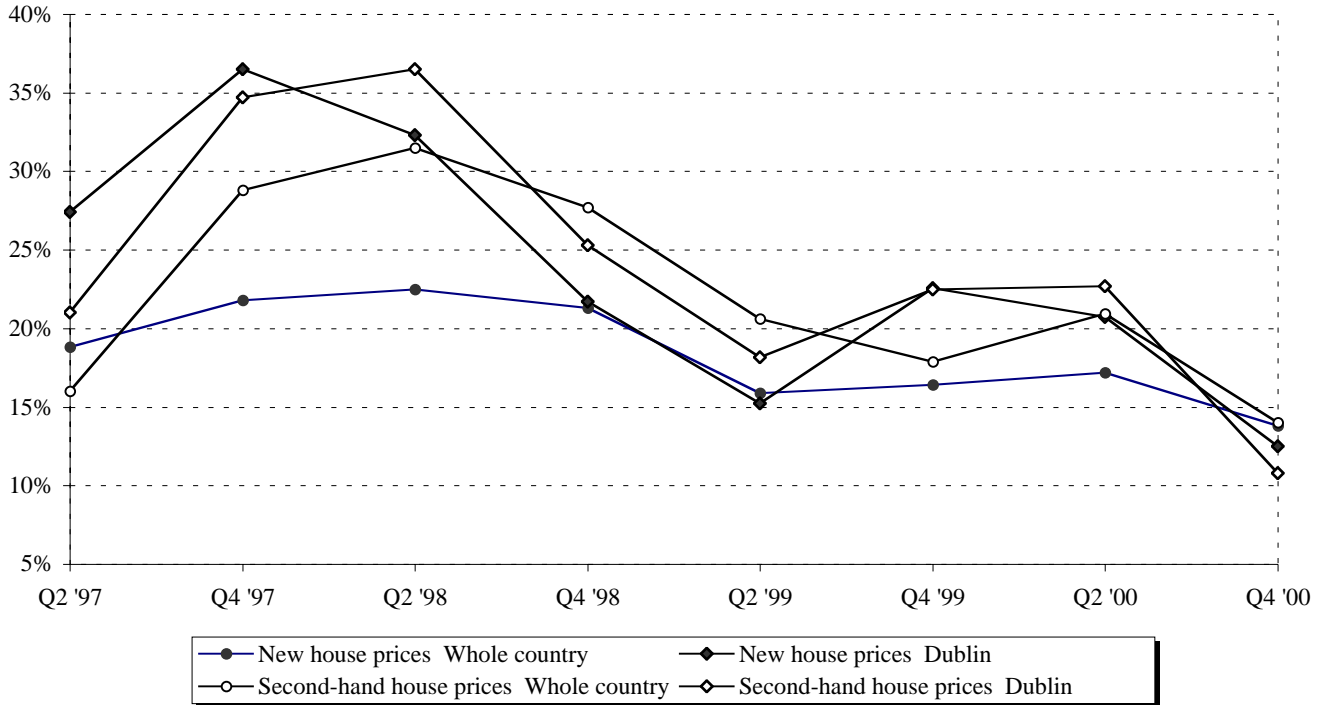
* See note on page 9.

PART IV - HOUSE PRICES

HOUSE PRICES - WHOLE COUNTRY AND DUBLIN



% CHANGE IN HOUSE PRICES OVER THE SAME QUARTER IN PREVIOUS YEAR



NEW HOUSE PRICES

Average price of new houses for which loans were approved by:-

Area	Year and Quarter	Building Societies		* Banks and Other Agencies		Local Authorities		All Agencies		Area
		£	—	£	—	£	—	£	—	
WHOLE COUNTRY	1996	74,193	94,206	67,358	85,527	39,135	49,691	68,677	87,202	WHOLE COUNTRY
	1997	83,908	106,541	79,440	100,868	43,586	55,343	80,506	102,222	
	1998	100,270	127,317	98,487	125,053	55,139	70,012	98,683	125,302	
	1999	121,176	153,862	116,081	147,392	73,810	93,719	116,970	148,521	
	2000	140,995	179,027	131,446	166,902	88,955	112,950	133,249	169,191	
1999	I	114,765	145,721	111,607	141,712	72,381	91,905	112,093	142,329	1999
	II	119,689	151,974	110,977	140,912	70,508	89,527	112,493	142,837	
	III	122,048	154,969	118,733	150,760	76,547	97,195	119,313	151,496	
	IV	129,074	163,890	123,553	156,880	80,327	101,994	124,545	158,140	
2000	I	131,600	167,098	125,331	159,138	82,781	105,110	126,550	160,685	2000
	II	140,302	178,147	129,898	164,936	77,321	98,177	131,821	167,378	
	III	142,534	180,981	131,524	167,001	89,154	113,202	133,459	169,458	
	IV	148,757	188,882	140,133	177,932	95,994	121,887	141,772	180,013	
CORK	1996	69,338	88,041	67,151	85,264	38,431	48,797	67,219	85,351	CORK
	1997	77,431	98,317	75,253	95,552	45,773	58,120	75,642	96,046	
	1998	87,705	111,362	89,054	113,075	59,954	76,126	88,312	112,133	
	1999	115,773	147,001	109,777	139,388	71,091	90,267	111,052	141,007	
	2000	137,559	174,664	129,158	163,997	101,977	129,484	131,174	166,557	
	2000	I	131,748	167,285	127,449	161,827	90,000	114,276	128,499	
II		138,525	175,890	125,366	159,182	—	—	128,356	162,979	
III		139,037	176,541	130,218	165,343	101,500	128,878	132,382	168,090	
IV		141,327	179,448	134,782	171,138	103,109	130,921	136,202	172,941	
DUBLIN	1996	79,367	100,775	76,004	96,505	44,137	56,042	76,439	97,058	DUBLIN
	1997	99,422	126,240	94,654	120,186	53,234	67,593	96,111	122,036	
	1998	126,387	160,478	127,090	161,371	80,557	102,286	126,561	160,699	
	1999	154,569	196,262	152,344	193,437	91,242	115,853	152,414	193,526	
	2000	179,915	228,445	175,374	222,679	99,514	126,357	174,622	221,724	
2000	I	166,153	210,971	161,409	204,947	94,670	120,206	162,044	205,753	2000
	II	181,938	231,014	177,619	225,530	93,539	118,770	177,795	225,753	
	III	184,714	234,538	174,943	222,132	99,703	126,597	173,739	220,603	
	IV	186,310	236,565	187,782	238,434	102,622	130,303	184,213	233,902	

* Includes Irish Permanent plc. and First Active plc. - See note on page 7.

NEW HOUSE PRICES

Average price of new houses for which loans were approved by:-

Area	Year and Quarter	Building Societies		* Banks and Other Agencies		Local Authorities		All Agencies		Area
		£	—	£	—	£	—	£	—	
GALWAY	1996	70,113	89,025	74,646	94,781	—	—	73,283	93,050	GALWAY
	1997	81,401	103,358	88,433	112,287	—	—	86,557	109,905	
	1998	91,066	115,630	94,494	119,983	32,500	41,266	93,514	118,738	
	1999	113,314	143,879	108,679	137,994	60,000	76,184	109,415	138,928	
	2000	149,553	189,893	123,582	156,917	52,790	67,029	129,022	163,824	
2000	I	128,986	163,778	119,095	151,219	—	—	120,750	153,321	2000
	II	132,982	168,852	122,780	155,898	73,950	93,897	124,530	158,120	
	III	147,668	187,500	123,698	157,064	42,833	54,387	129,178	164,022	
	IV	175,624	222,996	129,370	164,266	61,500	78,089	141,699	179,921	
LIMERICK	1996	67,847	86,148	64,887	82,389	48,000	60,947	65,589	83,281	LIMERICK
	1997	68,372	86,815	73,362	93,151	59,000	74,915	71,729	91,077	
	1998	80,271	101,923	82,807	105,143	-	-	82,102	104,248	
	1999	90,166	114,487	97,824	124,211	56,000	71,105	95,988	121,880	
	2000	104,877	133,166	118,148	150,017	94,000	119,355	114,854	145,834	
2000	I	109,057	138,474	113,639	144,292	—	—	112,497	142,842	2000
	II	105,549	134,020	116,199	147,542	—	—	114,293	145,122	
	III	100,127	127,135	121,983	154,886	95,000	120,625	115,974	147,257	
	IV	104,255	132,377	123,680	157,041	93,000	118,086	117,678	149,420	
WATERFORD	1996	62,779	79,713	62,925	79,898	33,000	41,901	62,835	79,784	WATERFORD
	1997	69,521	88,273	73,798	93,704	-	-	72,147	91,608	
	1998	80,998	102,846	86,490	109,820	-	-	85,021	107,954	
	1999	98,038	124,483	105,942	134,519	71,000	90,151	103,998	132,050	
	2000	99,976	126,943	122,118	155,058	87,465	111,058	114,758	145,713	
2000	I	102,144	129,696	119,048	151,160	—	—	113,641	144,294	2000
	II	106,965	135,818	118,584	150,571	78,000	99,040	115,155	146,217	
	III	98,341	124,867	123,116	156,325	85,895	109,064	115,044	146,076	
	IV	93,451	118,658	130,522	165,729	98,500	125,069	115,512	146,670	
OTHER AREAS	1996	73,324	93,102	62,714	79,630	34,030	43,209	64,652	82,091	OTHER AREAS
	1997	77,627	98,566	73,841	93,759	38,323	48,660	74,554	94,664	
	1998	93,461	118,671	91,696	116,430	38,862	49,345	91,821	116,589	
	1999	110,902	140,816	107,376	136,339	62,189	78,964	107,873	136,970	
	2000	127,949	162,462	119,990	152,356	68,583	87,082	121,324	154,050	
2000	I	118,957	151,044	115,560	146,731	63,751	80,947	116,062	147,368	2000
	II	125,104	158,849	117,123	148,716	62,630	79,524	118,390	150,324	
	III	131,847	167,411	120,238	152,671	69,698	88,498	122,294	155,281	
	IV	134,874	171,255	127,968	162,486	75,348	95,672	129,186	164,032	

* Includes Irish Permanent plc. and First Active plc. - See note on page 7.

SECOND-HAND HOUSE PRICES

Average price of second-hand houses for which loans were approved by:-

Year and Quarter	Building Societies		* Banks and Other Agencies		Local Authorities		All Agencies	
	£	—	£	—	£	—	£	—
1996	76,481	97,111	66,388	84,295	38,668	49,098	67,438	85,629
1997	88,599	112,498	79,558	101,018	45,407	57,655	80,892	102,712
1998	114,090	144,864	104,953	133,263	61,658	78,290	105,950	134,529
1999	138,160	175,427	127,562	161,970	82,525	104,785	128,622	163,316
2000	158,894	201,754	149,368	189,658	94,076	119,452	150,070	190,550
I	128,266	162,864	119,590	151,848	79,236	100,609	120,530	153,042
II	137,595	174,710	121,646	154,459	82,104	104,251	123,839	157,243
III	142,106	180,437	131,301	166,718	81,304	103,235	132,266	167,943
IV	144,599	183,603	137,254	174,277	87,354	110,917	137,462	174,541
I	143,598	182,332	136,525	173,351	88,310	112,131	137,029	173,991
II	157,290	199,717	149,369	189,660	94,840	120,422	149,757	190,152
III	165,742	210,449	154,563	196,255	94,323	119,766	155,626	197,604
IV	166,050	210,840	156,309	198,471	96,633	122,699	156,658	198,915
1996	66,271	84,147	60,536	76,865	41,917	53,224	60,762	77,152
1997	71,627	90,948	70,011	88,896	46,415	58,935	69,727	88,535
1998	95,153	120,819	85,506	108,570	52,458	66,608	86,972	110,432
1999	109,167	138,613	110,939	140,863	61,136	77,627	109,844	139,473
2000	134,323	170,555	134,210	170,412	88,168	111,950	133,149	169,064
I	121,229	153,929	128,186	162,763	75,875	96,341	126,613	160,765
II	128,378	163,006	131,494	166,963	73,060	92,767	130,249	165,382
III	142,881	181,421	138,031	175,263	84,312	107,054	137,992	175,214
IV	143,521	182,234	139,258	176,821	93,715	118,994	137,309	174,346
1996	86,198	109,449	83,429	105,933	44,573	56,596	82,246	104,431
1997	108,146	137,317	104,070	132,142	52,804	67,047	103,374	131,258
1998	142,954	181,514	140,641	178,577	76,756	97,460	138,942	176,420
1999	171,721	218,041	168,299	213,696	93,566	118,804	165,869	210,610
2000	194,697	247,214	199,108	252,815	104,636	132,860	194,559	247,039
I	175,306	222,593	182,077	231,190	95,582	121,364	177,266	225,081
II	195,147	247,786	201,644	256,035	103,109	130,921	196,044	248,925
III	203,813	258,789	203,469	258,352	108,380	137,614	200,638	254,758
IV	201,099	255,343	207,110	262,975	110,716	140,580	201,804	256,238

* Includes Irish Permanent plc. and First Active plc. - See note on page 7.

SECOND-HAND HOUSE PRICES

Average price of second-hand houses for which loans were approved by:-

Year and Quarter	Building Societies		* Banks and Other Agencies		Local Authorities		All Agencies	
	£	—	£	—	£	—	£	—
1996	69,030	87,650	69,618	88,397	37,483	47,594	69,321	88,020
1997	77,938	98,961	80,024	101,610	40,000	50,790	79,379	100,791
1998	97,653	123,994	100,740	127,913	66,583	84,543	99,953	126,914
1999	103,809	131,810	118,587	150,574	62,778	79,712	115,892	147,152
2000	116,577	148,022	134,872	171,252	61,250	77,771	130,850	166,145
I	101,345	128,682	130,288	165,432	—	—	124,971	158,680
II	106,303	134,977	134,378	170,625	—	—	129,117	163,945
III	119,799	152,113	136,837	173,747	61,250	77,771	132,626	168,400
IV	130,837	166,129	137,568	174,675	—	—	135,817	172,452
1996	53,612	68,073	58,484	74,259	23,999	30,472	55,969	71,066
1997	66,942	84,999	62,604	79,491	29,658	37,658	61,632	78,256
1998	74,584	94,702	78,265	99,376	35,330	44,860	76,229	96,791
1999	97,529	123,836	93,916	119,249	43,581	55,336	93,777	119,072
2000	114,389	145,244	112,232	142,505	59,773	75,896	111,982	142,188
I	115,938	147,211	101,260	128,574	50,000	63,487	103,546	131,476
II	103,682	131,649	109,336	138,828	60,000	76,184	107,743	136,805
III	114,425	145,290	121,754	154,596	65,710	83,434	119,172	151,317
IV	124,490	158,070	116,850	148,369	54,111	68,707	117,261	148,891
1996	56,267	71,444	48,552	61,648	33,192	42,145	49,582	62,956
1997	59,895	76,051	59,245	75,226	38,392	48,748	57,735	73,308
1998	76,080	96,602	75,495	95,859	47,688	60,551	73,990	93,948
1999	93,813	119,118	92,077	116,914	61,842	78,523	91,175	115,768
2000	102,372	129,986	116,854	148,374	73,608	93,463	111,568	141,662
I	101,973	129,479	100,602	127,738	72,722	92,338	99,599	126,465
II	100,539	127,658	113,557	144,188	67,833	86,130	110,338	140,100
III	103,178	131,009	118,874	150,939	74,782	94,954	113,214	143,752
IV	103,251	131,102	140,432	178,312	76,750	97,452	126,449	160,557
1996	70,757	89,843	56,921	72,275	31,634	40,167	58,480	74,254
1997	72,951	92,629	67,398	85,578	37,259	47,309	68,004	86,347
1998	91,182	115,777	88,245	112,048	40,001	50,791	88,111	111,878
1999	114,213	145,021	105,356	133,775	61,949	78,659	106,397	135,096
2000	134,369	170,613	123,611	156,954	80,534	102,257	124,783	158,442
I	121,669	154,488	114,350	145,195	74,507	94,604	115,102	146,149
II	127,656	162,090	122,698	155,794	79,279	100,664	123,015	156,197
III	143,138	181,748	129,262	164,129	81,012	102,864	130,922	166,237
IV	141,283	179,392	127,733	162,187	83,260	105,718	129,248	164,111

* Includes Irish Permanent plc. and First Active plc. - See note on page 7.

ANALYSIS OF LOAN APPROVALS *

RANGES OF HOUSE PRICES - DUBLIN AREA

Year	Not exceeding £60,000	£60,001to £80,000	£80,001to £100,000	£100,001to £150,000	£150,001to £200,000	Exceeding £200,000
	(<i>76,184</i>)	(<i>76,185to</i> <i>101,579</i>)	(<i>101,580to</i> <i>126,974</i>)	(<i>126,975to</i> <i>190,461</i>)	(<i>190,462to</i> <i>253,948</i>)	(<i>253,948</i>)
Percentages	%	%	%	%	%	%

NEW HOUSES

1996	38.9	36.7	12.6	7.6	3.0	1.2
1997	10.4	35.6	30.9	15.3	5.3	2.5
1998	3.8	19.1	34.6	31.2	6.3	4.9
1999	1.5	4.5	12.2	53.7	16.0	12.1
2000	0.3	0.5	1.8	49.9	29.7	17.9

**SECOND - HAND
HOUSES**

1996	49.4	23.4	11.2	10.2	3.5	2.3
1997	19.6	22.7	20.8	21.2	8.5	7.1
1998	11.0	19.5	22.5	27.2	10.2	9.6
1999	2.9	5.3	17.1	39.9	16.7	18.1
2000	0.9	1.7	5.4	41.7	25.2	25.0

ALL HOUSES

1996	45.9	27.9	11.7	9.3	3.3	1.9
1997	16.3	27.3	24.4	19.1	7.4	5.5
1998	9.0	19.4	25.9	28.3	9.1	8.3
1999	2.6	5.2	16.2	42.5	16.6	16.9
2000	0.8	1.5	4.8	43.2	26.1	23.7

* See note on page 9.

ANALYSIS OF LOAN APPROVALS *

RANGES OF HOUSE PRICES - WHOLE COUNTRY

Year	Not exceeding £60,000 (<i>_76,184</i>)	£60,001to £80,000 (<i>_76,185to _101,579</i>)	£80,001to £100,000 (<i>_101,580to _126,974</i>)	£100,001to £150,000 (<i>_126,975to _190,461</i>)	£150,001to £200,000 (<i>_190,462to _253,948</i>)	Exceeding £200,000 (<i>_253,948</i>)
Percentages	%	%	%	%	%	%

NEW HOUSES

1996	51.3	32.5	9.5	4.5	1.3	0.9
1997	25.1	37.6	21.8	11.3	3.3	1.0
1998	16.8	30.6	25.7	20.2	4.3	2.5
1999	7.6	22.7	24.4	31.2	9.0	5.2
2000	3.2	12.0	22.1	41.1	14.5	7.1

SECOND - HAND
HOUSES

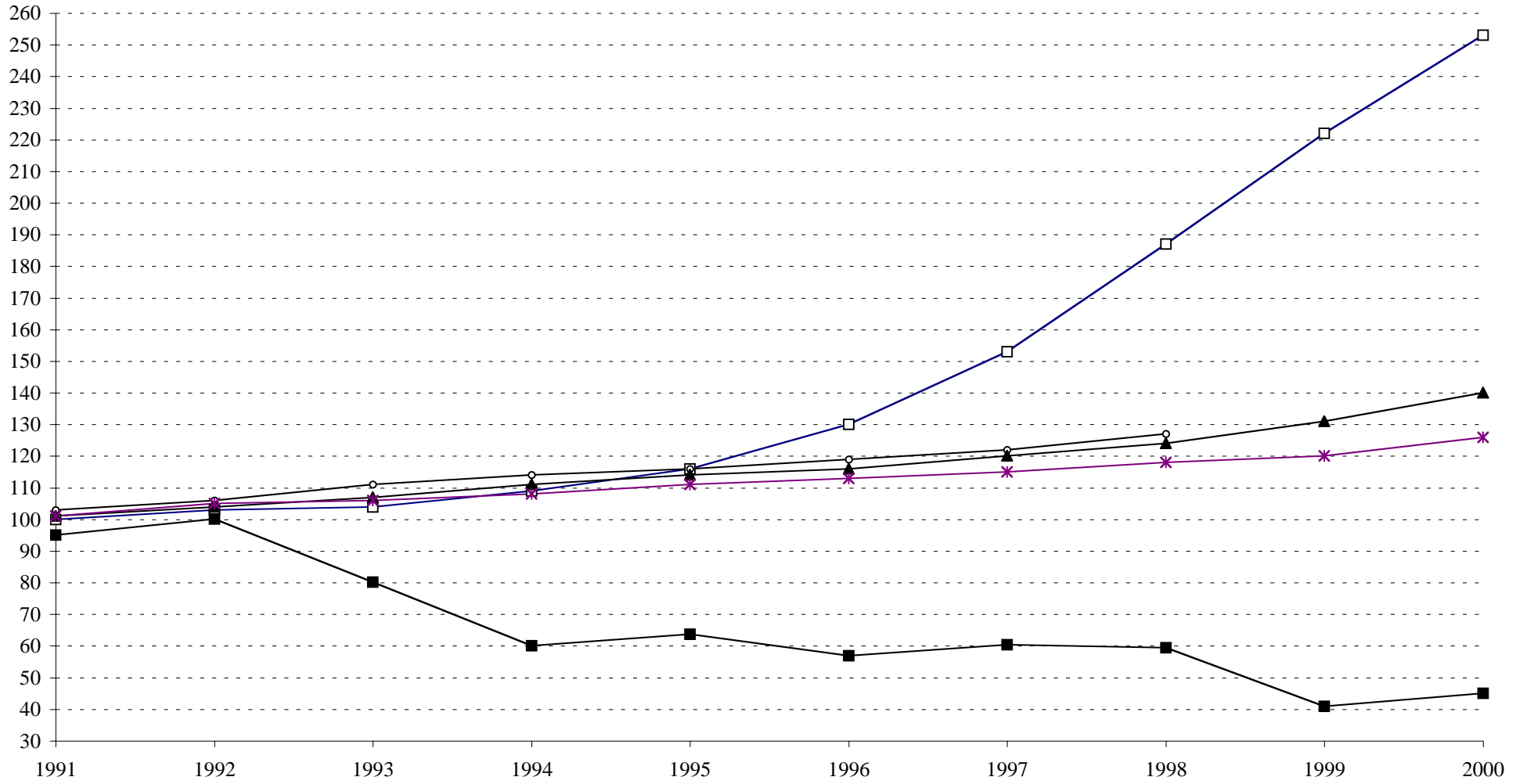
1996	61.0	19.6	9.7	6.3	2.0	1.5
1997	34.4	24.8	17.7	14.8	4.8	3.4
1998	26.6	22.3	20.1	19.3	6.4	5.3
1999	13.5	15.3	20.4	29.6	11.2	10.1
2000	6.8	10.6	15.8	36.6	16.6	13.5

ALL HOUSES

1996	57.0	24.9	9.6	5.5	1.7	1.2
1997	30.2	30.5	19.5	13.2	4.2	2.3
1998	22.9	25.4	22.2	19.6	5.6	4.2
1999	11.6	17.7	21.7	30.1	10.5	8.5
2000	5.6	11.1	18.0	38.1	15.9	11.4

* See note on page 9.

TRENDS IN HOUSE PRICES, BUILDING SOCIETIES MORTGAGE INTEREST RATES, EARNINGS, COST INDICES
 (Base 1st. Quarter 1991 = 100)



—□— Private new house prices
 —■— Building societies mortgage interest rates
 —○— Average earnings of adult workers
 —▲— House building cost
 —*— Consumer prices

PRICE / MORTGAGE INTEREST RATES / EARNINGS / COST INDICES

Trends in private new house prices, building societies mortgage interest rates, earnings, house building costs and consumer prices

Base: 1st Quarter 1991 = 100

	Column 1	Column 2	Column 3	Column 4	Column 5
Year and Quarter	Private new house prices	Building societies mortgage interest rates	Average earnings of adult workers	House Building Cost	Consumer Prices
1991	100	95	103	101	101
1992	103	100	106	104	105
1993	104	80	111	107	106
1994	109	60	114	111	108
1995	116	64	116	114	111
1996	130	57	119	116	113
1997	153	60	122	120	115
1998	187	59	127	124	118
1999	222	41	n/a	131	120
2000	253	45	n/a	140	126
1999					
QI	212	46	130	126	118
QII	213	44	n/a	130	119
QIII	226	40	n/a	133	120
QIV	236	35	n/a	134	121
2000					
QI	240	38	n/a	135	123
QII	250	43	n/a	136	126
QIII	253	48	n/a	137	127
QIV	269	51	n/a	* 153	129

1. The figures in Column 1 are based on the average price of new houses for which loans were approved by the main lending agencies as given on pages 34-35.
2. Column 2 is based on building societies mortgage loans, published by Central Statistics Office.
3. Column 3 relates to the figures for average weekly earnings of adult workers in manufacturing industries, published by the Central Statistics Office.
4. The figures in Column 4 are based on the House Building Cost Index on the 1st day of the third month in each quarter.
* The index since October, 2000, includes the first phase of an agreement following a review of rates of pay and grading structures for the Construction Industry and the first phase increase under the Programme for Prosperity and Fairness (PPF).
5. Column 5 is based on the Consumer Price Index, published by the Central Statistics Office.

NATIONAL HOUSE BUILDING COST INDEX

Base: January 1991 = 100

Month	1991	1992	1993	1994	1995	1996	1997	1998	1999	2000
January	100.0	102.6	105.3	109.2	113.5	115.9	118.0	122.9	126.3	135.8
February	100.7	103.4	105.1	109.3	114.1	115.7	118.5	123.1	126.4	136.1
March	100.8	103.5	105.1	109.4	114.1	115.9	118.8	123.8	126.5	136.4
April	102.6	104.9	107.6	110.3	114.1	115.9	119.8	123.8	130.5	136.5
May	102.7	104.9	107.7	110.1	114.1	115.9	119.8	124.5	130.5	136.8
June	102.7	104.9	107.7	110.6	114.1	116.0	119.9	124.5	130.5	136.9
July	102.7	105.0	107.8	110.7	114.5	116.0	120.8	125.7	131.5	137.2
August	102.7	105.0	107.8	110.9	114.5	116.0	121.0	125.7	131.5	137.2
September	103.3	105.5	108.2	112.2	115.7	116.9	121.5	126.0	134.1	137.7
October	103.0	105.5	108.4	112.7	115.8	117.1	122.0	126.2	134.7	*153.8
November	103.0	105.4	108.4	112.9	115.9	117.2	122.6	126.2	134.8	153.8
December	102.5	105.2	108.7	113.1	115.9	117.2	122.6	126.1	134.9	153.9
Yearly average	102.2	104.7	107.3	111.0	114.7	116.3	120.4	124.9	131.0	141.0
Increase on previous year	3.7%	2.4%	2.5%	3.4%	3.3%	1.4%	3.5%	3.7%	4.9%	7.6%

1. The index relates to costs ruling on the first day of each month.
2. The index relates solely to labour and material costs which should normally not exceed 65% of the total price of a house. It does not include items such as overheads, profit, interest charges, land development etc.

* The index since October, 2000, includes the first phase of an agreement following a review of rates of pay and grading structures for the Construction Industry and the first phase increase under the Programme for Prosperity and Fairness (PPF).

PART V - LOCAL AUTHORITY HOUSING

SALE OF LOCAL AUTHORITY HOUSES

County Councils					Sales completed	Sales approved*	Applications received
	1996	1997	1998	1999	2000		
Carlow	18	24	17	60	67	94	109
Cavan	20	9	12	21	23	43	66
Clare	34	49	42	29	34	84	102
Cork	74	94	121	121	129	203	219
Donegal	77	87	91	60	70	209	179
D/Laoghaire-Rathdown	50	54	23	34	7	39	90
Fingal	33	59	98	33	17	23	51
Galway	93	37	33	33	28	55	79
Kerry	177	165	100	128	135	196	250
Kildare	18	33	18	36	25	48	70
Kilkenny	17	35	45	61	70	130	161
Laois	20	25	46	31	30	30	40
Leitrim	17	13	14	24	13	0	18
Limerick	23	50	20	31	22	43	120
Longford	6	18	10	29	27	49	53
Louth	179	101	118	103	62	128	199
Mayo	35	49	81	45	63	148	149
Meath	27	29	25	31	16	46	79
Monaghan	41	36	28	49	38	18	52
Offaly	31	55	60	64	52	72	107
Roscommon	8	11	9	12	16	42	44
Sligo	31	27	15	37	16	51	53
South Dublin	103	97	286	396	230	468	511
Tipperary N.R.	22	58	44	63	52	101	40
Tipperary S.R.	137	96	70	87	96	36	123
Waterford	32	38	37	65	28	16	56
Westmeath	17	32	10	21	15	32	48
Wexford	63	79	72	101	126	337	298
Wicklow	109	93	73	45	41	104	154
County Boroughs							
Cork	59	73	65	102	80	66	164
Dublin	516	331	190	143	118	470	599
Galway	38	30	27	34	22	30	52
Limerick	103	89	47	47	21	63	83
Waterford	56	63	59	80	55	125	130
TOTALS	2,284	2,139	2,006	2,256	1,844	3,599	4,548

Footnotes:- County Councils include houses sold by Urban District Councils and Town Commissioners.

* i.e. Letter issued by housing authority to tenant offering sale of dwelling.

LOCAL AUTHORITY HOUSING

NEW BUILD AND ACQUISITIONS

County Councils	Completions				Acquisitions				Acquired	Completed (p) 2000 *	Commenced	In progress at 31 Dec'00
	1996	1997	1998	1999	1996	1997	1998	1999				
Carlow	43	56	35	39	13	11	5	5	5	34	129	109
Cavan	43	78	42	67	7	3	9	10	4	37	84	108
Clare	44	73	59	104	12	11	21	27	8	20	40	70
Cork	197	214	140	179	72	36	29	74	114	113	154	368
Donegal	165	84	131	210	47	29	8	8	15	176	205	227
D/Laoghaire-Rathdown	109	132	109	38	40	43	8	15	19	11	170	193
Fingal	86	107	42	51	3	8	16	15	11	26	100	173
Galway	67	71	60	81	8	4	2	1	6	83	93	141
Kerry	129	94	123	167	6	16	16	2	8	81	137	246
Kildare	82	99	104	118	21	17	8	7	25	61	165	230
Kilkenny	30	26	36	33	26	9	12	14	17	38	76	81
Laois	52	33	27	48	8	4	3	9	20	48	92	124
Leitrim	42	38	28	30	4	5	5	1	2	32	54	67
Limerick	47	69	59	57	14	7	8	21	21	36	88	189
Longford	34	44	50	58	21	29	22	19	31	36	60	102
Louth	10	94	129	103	21	10	6	1	21	72	89	61
Mayo	110	82	73	102	5	14	0	3	3	114	170	164
Meath	76	83	73	139	11	3	8	25	7	54	171	186
Monaghan	19	26	63	9	2	5	6	3	6	50	53	92
Offaly	40	78	19	65	7	8	5	11	13	59	95	98
Roscommon	47	34	53	13	4	6	8	2	10	18	70	79
Sligo	29	53	66	25	5	20	15	33	20	50	72	78
South Dublin	82	33	166	147	30	22	15	52	61	86	197	182
Tipperary N.R.	64	38	63	50	3	2	6	6	10	13	106	146
Tipperary S.R.	95	75	69	78	7	11	12	12	6	62	86	86
Waterford	51	48	49	65	2	3	5	1	9	48	63	75
Westmeath	55	81	52	4	8	13	8	20	22	100	72	62
Wexford	100	143	94	132	4	1	5	6	16	191	134	154
Wicklow	101	126	162	115	49	22	23	25	10	70	176	206
County Boroughs												
Cork	88	54	68	154	73	70	76	80	106	102	172	148
Dublin	372	175	270	202	330	124	121	280	361	143	428	478
Galway	44	72	125	125	18	8	4	5	4	56	66	36
Limerick	66	62	56	56	11	10	8	3	11	35	40	152
Waterford	57	57	76	45	5	1	8	8	1	49	169	169
TOTALS	2,676	2,632	2,771	2,909	897	585	511	804	1,003	2,204	4,076	5,080

Footnotes:- County Council areas include Boroughs and Urban Districts.

See notes (b) and (c) on page 11.

* A detailed breakdown is shown on page 49.

LOCAL AUTHORITY HOUSING

NEW BUILD AND ACQUISITIONS 2000 (p)

County Councils	Acquired	Completed	Commenced	Urban Districts	Acquired	Completed	Commenced
Carlow	5	14	99	Arklow	0	0	44
Cavan	0	26	71	Athlone	10	26	20
Clare	5	17	40	Athy	2	0	0
Cork(North)	6	38	24	Ballina	0	0	0
Cork(South)	88	26	40	Ballinasloe	1	10	20
Cork(West)	4	17	18	Birr	0	15	0
Donegal	3	171	154	Bray	2	0	64
D/Laoghaire-Rathdownr	19	11	170	Buncrana	1	5	39
Fingal	11	26	100	Bundoran	3	0	0
Galway	5	73	73	Carlow	0	20	30
Kerry	1	73	94	Carrickmacross	3	0	0
Kildare	12	61	165	Carrick-on -Suir	1	0	1
Kilkenny	13	21	60	Cashel	0	22	22
Laois	20	48	92	Castlebar	0	0	0
Leitrim	2	32	54	Castleblayney	2	0	0
Limerick	21	36	88	Cavan	4	11	13
Longford	23	26	60	Clonakilty	0	0	0
Louth	1	18	38	Clones	0	0	18
Mayo	3	114	167	Cobh	0	0	0
Meath	7	44	133	Dundalk	11	32	28
Monaghan	1	50	35	Dungarvan	6	10	0
Offaly	10	44	63	Ennis	0	3	0
Roscommon	10	18	70	Enniscorthy	2	18	0
Sligo	10	30	46	Fermoy	3	0	0
South Dublin	61	86	197	Kells	0	10	18
Tipperary N.R.	1	11	71	Killarney	4	0	8
Tipperary S.R.	0	38	40	Kilrush	3	0	0
Waterford	3	38	63	Kinsale	2	0	0
Westmeath	12	74	52	Letterkenny	8	0	12
Wexford	14	140	76	Listowel	0	0	11
Wicklow	8	65	48	Longford	8	10	0
Total (1)	379	1,486	2,501	Macroom	5	4	0
County				Mallow	4	10	20
Boroughs				Midleton	2	0	13
Cork	106	102	172	Monaghan	0	0	0
Dublin	361	143	428	Naas	11	0	0
Galway	4	56	66	Navan	0	0	0
Limerick	11	35	40	Nenagh	2	0	0
Waterford	1	49	169	New Ross	0	5	53
Total (2)	483	385	875	Skibbereen	0	0	27
Borough				Templemore	4	2	4
Corporations				Thurles	3	0	31
Clonmel	5	0	21	Tipperary	0	2	2
Drogheda	9	22	23	Tralee	3	8	24
Kilkenny	4	17	16	Trim	0	0	20
Sligo	10	20	26	Tullamore	3	0	32
Wexford	0	28	5	Westport	0	0	3
Total (3)	28	87	91	Wicklow	0	5	20
				Youghal	0	18	12
				Total (4)	113	246	609
				TOTAL (1+2+3+4)	1,003	2,204	4,076

FIRST TIME LETTINGS BY LOCAL AUTHORITIES

County Councils	1999			2000		
	Completions	Casual Vacancies	Total Lettings	Completions	Casual Vacancies	Total Lettings
Carlow	17	13	30	22	12	34
Cavan	36	15	51	44	23	67
Clare	38	64	102	21	62	83
Cork(North)	54	53	107	53	47	100
Cork(South)	55	51	106	64	42	106
Cork(West)	21	14	35	33	9	42
Donegal	125	41	166	143	54	197
Dun Laoghaire-Rathdown	42	204	246	35	156	191
Fingal	47	84	131	57	52	109
Galway	73	33	106	75	26	101
Kerry	67	41	108	86	63	149
Kildare	86	22	108	82	30	112
Kilkenny	23	13	36	44	19	63
Laois	58	30	88	55	31	86
Leitrim	29	15	44	44	38	82
Limerick	44	57	101	55	40	95
Longford	47	21	68	54	22	76
Louth	42	10	52	10	9	19
Mayo	83	39	122	126	40	166
Meath	79	33	112	58	22	80
Monaghan	8	3	11	44	13	57
Offaly	32	8	40	45	17	62
Roscommon	53	20	73	23	19	42
Sligo	33	26	59	39	19	58
South Dublin	124	241	365	116	210	326
Tipperary N.R.	43	46	89	21	31	52
Tipperary S.R.	32	36	68	52	31	83
Waterford	65	12	77	15	10	25
Westmeath	32	20	52	81	29	110
Wexford	93	59	152	111	66	177
Wicklow	60	41	101	57	23	80
Total (1)	1,641	1,365	3,006	1,765	1,265	3,030
County Boroughs						
Cork	133	201	334	113	162	275
Dublin	360	770	1,130	335	567	902
Galway	93	38	131	55	88	143
Limerick	33	207	240	13	197	210
Waterford	42	79	121	57	88	145
Total (2)	661	1,295	1,956	573	1,102	1,675
County Corporations						
Clonmel	18	13	31	17	20	37
Drogheda	26	13	39	46	16	62
Kilkenny	0	9	9	22	12	34
Sligo	63	35	98	25	20	45
Wexford	0	20	20	30	24	54
Total (3)	107	90	197	140	92	232

Footnote:- The figures shown for completions include new build and acquisitions.

FIRST TIME LETTINGS BY LOCAL AUTHORITIES

Urban Districts	1999			2000		
	Completions	Casual Vacancies	Total Lettings	Completions	Casual Vacancies	Total Lettings
Arklow	17	8	25	n/a	n/a	n/a
Athlone	3	14	17	26	15	41
Athy	1	3	4	1	13	14
Ballina	0	11	11	0	6	6
Ballinasloe	12	6	18	10	10	20
Birr	13	3	16	0	6	6
Bray	61	7	68	4	27	31
Buncrana	0	5	5	5	2	7
Bundoran	0	0	0	0	1	1
Carlow	17	6	23	16	16	32
Carrickmacross	3	3	6	1	4	5
Carrick-on -Suir	7	4	11	0	12	12
Cashel	16	4	20	14	4	18
Castlebar	0	6	6	0	7	7
Castleblayney	0	2	2	2	2	4
Cavan	21	10	31	9	14	23
Clonakilty	n/a	n/a	n/a	n/a	n/a	n/a
Clones	0	3	3	n/a	n/a	n/a
Cobh	37	4	41	0	5	5
Dundalk	20	28	48	10	33	43
Dungarvan	2	7	9	14	2	16
Ennis	6	25	31	3	25	28
Enniscorthy	24	2	26	18	5	23
Fermoy	0	5	5	0	5	5
Kells	20	8	28	10	3	13
Killarney	9	7	16	2	3	5
Kilrush	9	17	26	2	14	16
Kinsale	0	0	0	5	1	6
Letterkenny	n/a	n/a	n/a	n/a	n/a	n/a
Listowel	2	4	6	3	6	9
Longford	25	16	41	16	32	48
Macroom	2	2	4	4	4	8
Mallow	0	11	11	10	15	25
Midleton	6	1	7	1	4	5
Monaghan	0	11	11	0	10	10
Naas	29	11	40	7	4	11
Navan	33	2	35	4	4	8
Nenagh	5	10	15	0	4	4
New Ross	0	15	15	n/a	n/a	n/a
Skibbereen	0	0	0	0	0	0
Templemore	10	0	10	3	3	6
Thurles	0	7	7	14	4	18
Tipperary	6	31	37	2	13	15
Tralee	62	24	86	7	33	40
Trim	0	0	0	0	2	2
Tullamore	11	4	15	16	16	32
Westport	17	6	23	0	6	6
Wicklow	15	14	29	n/a	n/a	n/a
Youghal	9	4	13	18	0	18
Total (4)	530	371	901	257	395	652
TOTAL (1+2+3+4)	2,939	3,121	6,060	2,735	2,854	5,589

NUMBER OF LOCAL AUTHORITY HOUSES LET AT 31 DECEMBER

YEAR	AUTHORITY	RENTED DWELLINGS
1995	County Councils	36,689
	County Boroughs	45,023
	Urban District Councils	15,507
	TOTAL	97,219
1996	County Councils	37,542
	County Boroughs	45,228
	Urban District Councils	15,624
	TOTAL	98,394
1997	County Councils	44,537
	County Boroughs	38,501
	Urban District Councils	15,824
	TOTAL	98,862
1998	County Councils	45,066
	County Boroughs	38,210
	Urban District Councils	15,983
	TOTAL	99,259
1999 (p)	County Councils	45,062
	County Boroughs	38,154
	Urban District Councils	15,947
	TOTAL	99,163

AVERAGE WEEKLY RENT OF ALL DWELLINGS -

1997	£14.54	<i>_18.46</i>
1998	£15.48	<i>_19.66</i>
1999	£16.74	<i>_21.26</i>

Footnote:-The figures for Urban District Councils include borough corporation and town commissioner dwellings.

LOCAL AUTHORITY MANAGEMENT AND MAINTENANCE EXPENDITURE

	1995 £M	1996 £M	1997 £M	1998 £M	(p) 1999 £M
RECEIPTS					
Rents	63.71	68.16	74.73	79.93	86.34
Net proceeds of Sales (to Revenue Account) *	22.65	20.14	14.39	12.71	-
Miscellaneous	8.60	9.11	5.27	8.70	8.80
TOTAL	94.96	97.41	94.39	101.34	95.14
EXPENDITURE					
Maintenance & Management	99.93	105.34	108.50	124.79	134.85
TOTAL	99.93	105.34	108.50	124.79	134.85

	1995 _M	1996 _M	1997 _M	1998 _M	(p) 1999 _M
RECEIPTS					
<i>Rents</i>	<i>80.90</i>	<i>86.55</i>	<i>94.89</i>	<i>101.49</i>	<i>109.63</i>
<i>Net proceeds of Sales (to Revenue Account) *</i>	<i>28.76</i>	<i>25.57</i>	<i>18.27</i>	<i>16.14</i>	<i>-</i>
<i>Miscellaneous</i>	<i>10.92</i>	<i>11.57</i>	<i>6.69</i>	<i>11.05</i>	<i>11.18</i>
TOTAL	120.58	123.69	119.85	128.68	120.81
EXPENDITURE					
<i>Maintenance & Management</i>	<i>126.88</i>	<i>133.75</i>	<i>137.76</i>	<i>158.45</i>	<i>171.22</i>
TOTAL	126.88	133.75	137.76	158.45	171.22

* 80% of the proceeds in 1997 and 1998 of pre 1993 tenant purchase schemes together with the full proceeds of the 1993 and 1995 schemes are assigned to local authorities housing capital accounts toward the funding of their housing construction programmes.

LOCAL AUTHORITY HOUSING REVENUE ACCOUNT EXPENDITURE 1999

County Councils	Number of dwellings occupied	Maintenance expenditure		Other management expenditure		TOTAL EXPENDITURE	
		£		£		£	
Carlow	592	256,907	326,205	225,185	285,926	482,092	612,131
Cavan	748	234,427	297,661	185,970	236,134	420,397	533,795
Clare	830	787,279	999,638	766,917	973,784	1,554,196	1,973,422
Cork(North)	1,107	486,863	618,188	590,011	749,159	1,076,874	1,367,348
Cork(South)	1,372	1,030,283	1,308,190	930,732	1,181,786	1,961,015	2,489,975
Cork(West)	493	172,594	219,149	247,980	314,869	420,574	534,018
Donegal	2,840	1,141,300	1,449,152	1,343,520	1,705,919	2,484,820	3,155,071
Dun Laoghaire-Rathdown	3,848	3,447,558	4,377,496	4,403,647	5,591,478	7,851,205	9,968,974
Fingal	3,149	2,043,510	2,594,722	3,807,846	4,834,967	5,851,356	7,429,690
Galway	1,533	522,925	663,978	1,393,319	1,769,151	1,916,244	2,433,128
Kerry	2,079	569,078	722,580	1,109,697	1,409,025	1,678,775	2,131,605
Kildare	1,692	1,734,200	2,201,980	995,071	1,263,480	2,729,271	3,465,459
Kilkenny	1,195	406,917	516,678	703,853	893,709	1,110,770	1,410,387
Laois	976	242,904	308,424	571,068	725,107	813,972	1,033,531
Leitrim	723	155,919	197,976	435,384	552,824	591,303	750,800
Limerick	1,398	362,972	460,880	1,118,489	1,420,188	1,481,461	1,881,067
Longford	828	207,556	263,542	867,185	1,101,098	1,074,741	1,364,640
Louth	452	179,983	228,531	268,510	340,937	448,493	569,469
Mayo	1,508	243,778	309,534	945,754	1,200,860	1,189,532	1,510,394
Meath	1,391	788,478	1,001,161	828,326	1,051,757	1,616,804	2,052,918
Monaghan	399	323,271	410,469	359,618	456,620	682,889	867,090
Offaly	613	147,500	187,286	659,505	837,399	807,005	1,024,685
Roscommon	753	187,884	238,563	126,460	160,571	314,344	399,135
Sligo	625	186,330	236,590	355,453	451,332	541,783	687,923
South Dublin	7,645	4,992,906	6,339,683	6,672,215	8,471,965	11,665,121	14,811,648
Tipperary N.R.	782	196,682	249,735	717,974	911,639	914,656	1,161,374
Tipperary S.R.	961	430,500	546,622	831,263	1,055,486	1,261,763	1,602,109
Waterford	706	163,000	206,967	252,680	320,837	415,680	527,805
Westmeath	753	201,230	255,509	386,376	490,597	587,606	746,105
Wexford	1,518	520,080	660,365	761,302	966,654	1,281,382	1,627,020
Wicklow	1,553	213,967	271,682	95,631	121,426	309,598	393,108
Total	45,062	22,578,780	28,669,137	32,956,942	41,846,684	55,535,722	70,515,821
County Boroughs							
Cork	7,108	4,968,941	6,309,254	2,843,989	3,611,121	7,812,930	9,920,375
Dublin	24,315	22,442,361	28,495,920	29,048,231	36,883,645	51,490,592	65,379,565
Galway	1,326	985,843	1,251,763	886,773	1,125,969	1,872,616	2,377,732
Limerick	3,047	1,587,219	2,015,352	1,784,795	2,266,222	3,372,013	4,281,574
Waterford	2,358	1,129,172	1,433,753	780,810	991,424	1,909,982	2,425,177
Total	38,154	31,113,536	39,506,042	35,344,597	44,878,381	66,458,133	84,384,422
Borough Corporations							
Clonmel	506	180,000	228,553	300,201	381,177	480,201	609,729
Drogheda	849	482,066	612,098	445,667	565,880	927,733	1,177,978
Kilkenny	466	443,254	562,816	287,022	364,442	730,276	927,259
Sligo	737	462,085	586,727	399,631	507,427	861,716	1,094,154
Wexford	674	197,965	251,364	111,983	142,189	309,948	393,553
Total	3,232	1,765,370	2,241,557	1,544,504	1,961,115	3,309,874	4,202,672

LOCAL AUTHORITY HOUSING REVENUE ACCOUNT EXPENDITURE 1999

Urban Districts	Number of dwellings occupied	Maintenance expenditure		Other management expenditure		TOTAL EXPENDITURE	
		£		£		£	
Arklow	362	64,570	81,987	66,750	84,755	131,320	166,742
Athlone	289	177,281	225,100	265,187	336,718	442,468	561,818
Athy	237	90,210	114,543	65,260	82,863	155,470	197,406
Ballina	284	156,006	198,087	114,344	145,187	270,350	343,274
Ballinasloe	248	153,398	194,775	76,260	96,830	229,658	291,606
Birr *	132	54,059	68,641	19,560	24,836	73,619	93,477
Bray	1,040	220,709	280,243	113,765	144,452	334,474	424,694
Buncrana	76	17,368	22,053	16,272	20,661	33,640	42,714
Bundoran	55	1,943	2,467	5,845	7,421	7,788	9,888
Carlow	447	222,618	282,667	219,524	278,738	442,142	561,405
Carrickmacross	76	47,412	60,201	38,193	48,495	85,605	108,696
Carrick-on -Suir	359	150,806	191,484	185,859	235,992	336,664	427,475
Cashel	125	65,477	83,139	87,860	111,559	153,337	194,698
Castlebar	157	56,400	71,613	37,789	47,982	94,189	119,595
Castleblayney	77	55,010	69,848	80,123	101,735	135,133	171,584
Cavan	345	157,502	199,986	22,010	27,947	179,512	227,933
Clonakilty	95	24,126	30,634	17,103	21,716	41,229	52,350
Clones	54	12,238	15,539	28,538	36,236	40,775	51,774
Cobh	245	80,293	101,951	124,963	158,670	205,256	260,621
Dundalk *	1,016	459,683	583,677	329,062	417,823	788,745	1,001,500
Dungarvan	363	236,444	300,222	35,397	44,945	271,841	345,167
Ennis	420	178,936	227,202	135,000	171,415	313,936	398,616
Enniscorthy	297	92,156	117,014	89,947	114,209	182,103	231,223
Fermoy	143	77,874	98,880	101,874	129,353	179,748	228,233
Kells	109	11,980	15,211	36,421	46,245	48,401	61,457
Killarney	205	57,500	73,010	26,960	34,232	84,460	107,242
Kilrush	179	74,100	94,088	41,320	52,466	115,420	146,553
Kinsale	72	38,345	48,688	37,208	47,244	75,553	95,933
Letterkenny *	199	33,000	41,901	63,736	80,928	96,736	122,829
Listowel	162	48,239	61,251	34,765	44,142	83,004	105,394
Longford	324	184,868	234,734	180,550	229,251	365,418	463,986
Macroom	88	84,762	107,626	45,932	58,322	130,694	165,947
Mallow	344	156,280	198,435	126,360	160,444	282,640	358,879
Midleton *	166	103,051	130,848	61,110	77,594	164,161	208,441
Monaghan	225	126,269	160,329	69,935	88,799	196,204	249,128
Naas	258	104,342	132,487	34,587	43,917	138,929	176,404
Navan	154	83,725	106,309	62,368	79,191	146,093	185,500
Nenagh *	178	53,022	67,324	82,681	104,983	135,703	172,307
New Ross	341	75,800	96,246	44,066	55,952	119,866	152,198
Skibbereen	60	22,047	27,994	44,951	57,075	66,998	85,069
Templemore	115	44,087	55,979	38,432	48,799	82,519	104,778
Thurles	240	114,803	145,770	67,657	85,907	182,460	231,676
Tipperary	315	159,741	202,829	199,053	252,745	358,793	455,573
Tralee	966	399,736	507,560	566,762	719,639	966,498	1,227,199
Trim	63	18,642	23,671	12,110	15,376	30,752	39,047
Tullamore	290	134,344	170,582	80,703	102,472	215,047	273,053
Westport	125	17,961	22,805	73,619	93,477	91,580	116,282
Wicklow *	233	18,184	23,089	47,767	60,652	65,951	83,740
Youghal	247	58,622	74,435	59,426	75,455	118,048	149,890
Total	12,600	5,075,969	6,445,151	4,414,961	5,605,845	9,490,930	12,050,996

LOCAL AUTHORITY HOUSING REVENUE ACCOUNT EXPENDITURE 1999

Town Commissioners	Number of dwellings occupied	Maintenance		Other management		TOTAL	
		expenditure		expenditure		EXPENDITURE	
		£	-	£	-	£	-
Ardee	0	0	0	0	0	0	0
Ballybay	2	0	0	200	254	200	254
Ballyshannon	10	603	765	3,563	4,524	4,166	5,289
Bandon	4	450	571	0	0	450	571
Belturbet	3	0	0	2,287	2,904	2,287	2,904
Boyle	18	3,000	3,809	0	0	3,000	3,809
Cootehill	17	2,787	3,539	0	0	2,787	3,539
Droichead Nua *	18	3,027	3,843	3,960	5,028	6,987	8,872
Gorey	1	0	0	250	317	250	317
Kilkee *	5	0	0	658	835	658	835
Loughrea	1	0	0	9,119	11,579	9,119	11,579
Mountmellick *	2	0	0	1,000	1,270	1,000	1,270
Muinebheag	3	0	0	0	0	0	0
Mullingar	0	0	0	0	0	0	0
Passage West	2	0	0	0	0	0	0
Portlaoise *	6	382	485	1,148	1,458	1,530	1,943
Tuam	23	5,923	7,521	17,391	22,082	23,314	29,603
Total	115	16,172	20,534	39,576	50,251	55,748	70,785
GRAND TOTAL	99,163	60,549,827	76,882,421	74,300,580	94,342,275	134,850,407	171,224,697

Outurn is provisional as completed returns were not submitted by all local authorities (*denotes where 1998 figures were used)

LOCAL AUTHORITY HOUSING REVENUE ACCOUNT INCOME 1999

County Councils	Rental income		Miscellaneous receipts		TOTAL INCOME	
	£	—	£	—	£	—
Carlow	529,309	672,084	0	0	529,309	672,084
Cavan	464,412	589,682	5,682	7,215	470,094	596,897
Clare	745,574	946,684	227,302	288,614	972,877	1,235,298
Cork(North)	894,790	1,136,149	277,256	352,043	1,172,046	1,488,191
Cork(South)	1,093,761	1,388,790	216,785	275,260	1,310,546	1,664,050
Cork(West)	376,655	478,253	19,113	24,269	395,768	502,522
Donegal	2,058,800	2,614,137	215,780	273,984	2,274,580	2,888,121
Dun Laoghaire-Rathdown	3,567,073	4,529,249	0	0	3,567,073	4,529,249
Fingal	3,155,176	4,006,247	2,802,134	3,557,976	5,957,310	7,564,223
Galway	1,117,247	1,418,610	206,205	261,827	1,323,452	1,680,437
Kerry	1,620,000	2,056,976	20,186	25,631	1,640,186	2,082,607
Kildare	1,245,575	1,581,554	0	0	1,245,575	1,581,554
Kilkenny	1,148,968	1,458,888	171,785	218,122	1,320,753	1,677,010
Laois	668,825	849,233	110,276	140,022	779,101	989,254
Leitrim	490,702	623,063	9,369	11,896	500,071	634,959
Limerick	1,119,050	1,420,901	215	273	1,119,265	1,421,174
Longford	887,327	1,126,673	13,044	16,562	900,371	1,143,235
Louth	453,006	575,199	35,278	44,794	488,284	619,993
Mayo	1,378,883	1,750,820	8,100	10,285	1,386,983	1,761,105
Meath	1,156,827	1,468,867	335,336	425,789	1,492,163	1,894,656
Monaghan	339,380	430,924	61,233	77,750	400,614	508,674
Offaly	563,800	715,878	120,574	153,097	684,374	868,976
Roscommon	530,686	673,832	37,772	47,961	568,458	721,793
Sligo	402,752	511,389	0	0	402,752	511,389
South Dublin	8,266,211	10,495,923	2,802,380	3,558,289	11,068,591	14,054,211
Tipperary N.R.	608,409	772,520	104,019	132,077	712,428	904,597
Tipperary S.R.	943,088	1,197,475	138,201	175,479	1,081,289	1,372,954
Waterford	622,822	790,821	7,530	9,561	630,352	800,382
Westmeath	504,066	640,032	31,058	39,435	535,124	679,467
Wexford	1,513,362	1,921,573	6,186	7,855	1,519,548	1,929,428
Wicklow	1,300,000	1,650,660	7,359	9,344	1,307,359	1,660,003
Total	39,766,536	50,493,086	7,990,159	10,145,409	47,756,696	60,638,495
County Boroughs						
Cork	5,961,947	7,570,111	0	0	5,961,947	7,570,111
Dublin	21,941,000	27,859,323	25,500	32,378	21,966,500	27,891,701
Galway	1,708,762	2,169,680	94,833	120,413	1,803,595	2,290,093
Limerick	2,361,224	2,998,135	0	0	2,361,224	2,998,135
Waterford	1,546,690	1,963,891	3,080	3,911	1,549,770	1,967,802
Total	33,519,622	42,561,140	123,413	156,702	33,643,035	42,717,843
Borough Corporations						
Clonmel	506,065	642,570	9,527	12,097	515,592	654,667
Drogheda	678,158	861,083	667	847	678,825	861,930
Kilkenny	375,785	477,149	2,364	3,001	378,149	480,150
Sligo	424,044	538,425	109,732	139,331	533,776	677,756
Wexford	543,083	689,573	16,000	20,316	559,083	709,889
Total	2,527,135	3,208,800	138,290	175,592	2,665,425	3,384,391

LOCAL AUTHORITY HOUSING REVENUE ACCOUNT INCOME 1999

Urban Districts	Rental income		Miscellaneous receipts		TOTAL INCOME	
	£	—	£	—	£	—
Arklow	297,388	377,605	23,149	29,393	320,537	406,998
Athlone	216,323	274,674	4,176	5,302	220,499	279,976
Athy	182,003	231,096	36,826	46,759	218,829	277,856
Ballina	233,769	296,825	8,730	11,085	242,499	307,910
Ballinasloe	224,820	285,463	1,596	2,027	226,416	287,489
Birr *	105,145	133,507	54	69	105,199	133,575
Bray	904,115	1,147,989	0	0	904,115	1,147,989
Buncrana	72,984	92,671	130	165	73,114	92,836
Bundoran	40,502	51,428	60	76	40,562	51,504
Carlow	340,851	432,791	49,884	63,340	390,735	496,131
Carrickmacross	59,823	75,959	8,759	11,122	68,582	87,081
Carrick-on -Suir	304,568	386,722	2,625	3,332	307,193	390,054
Cashel	109,000	138,401	3,830	4,863	112,830	143,265
Castlebar	115,269	146,361	0	0	115,269	146,361
Castleblayney	53,314	67,695	122	155	53,436	67,850
Cavan	274,941	349,103	7,994	10,150	282,935	359,253
Clonakilty	95,991	121,883	1,000	1,270	96,991	123,153
Clones	56,386	71,596	1,595	2,026	57,982	73,622
Cobh	210,504	267,285	4,222	5,360	214,726	272,645
Dundalk *	758,041	962,514	112,760	143,176	870,801	1,105,689
Dungarvan	250,075	317,530	0	0	250,075	317,530
Ennis	381,543	484,460	0	0	381,543	484,460
Enniscorthy	268,729	341,215	7,452	9,462	276,181	350,678
Fermoy	108,593	137,885	9,190	11,669	117,783	149,554
Kells	104,220	132,332	2,941	3,734	107,161	136,066
Killarney	162,031	205,737	3,179	4,036	165,210	209,773
Kilrush	155,565	197,527	7,674	9,744	163,239	207,271
Kinsale	48,985	62,198	680	863	49,665	63,062
Letterkenny *	195,706	248,495	11,532	14,643	207,238	263,138
Listowel	128,982	163,773	483	613	129,465	164,387
Longford	303,276	385,081	43,138	54,774	346,414	439,855
Macroom	64,494	81,890	5,484	6,963	69,978	88,854
Mallow	271,319	344,504	12,740	16,176	284,059	360,681
Midleton *	95,541	121,312	1,324	1,681	96,865	122,993
Monaghan	224,213	284,692	1,046	1,328	225,259	286,020
Naas	247,134	313,795	12,027	15,271	259,161	329,066
Navan	115,909	147,174	28,398	36,058	144,307	183,232
Nenagh *	120,587	153,114	11,396	14,470	131,983	167,584
New Ross	258,509	328,239	0	0	258,509	328,239
Skibbereen	65,565	83,250	8,318	10,562	73,883	93,812
Templemore	88,959	112,955	985	1,251	89,944	114,205
Thurles	179,069	227,371	658	835	179,727	228,206
Tipperary	385,618	489,634	13,092	16,623	398,710	506,257
Tralee	746,256	947,550	28,438	36,109	774,694	983,658
Trim	65,043	82,587	1,406	1,785	66,449	84,373
Tullamore	222,912	283,040	52,904	67,174	275,816	350,214
Westport	126,291	160,357	650	825	126,941	161,182
Wicklow *	185,321	235,309	9,125	11,586	194,446	246,895
Youghal	221,976	281,851	1,800	2,286	223,776	284,137
Total	10,448,158	13,266,424	543,571	690,193	10,991,730	13,956,618

LOCAL AUTHORITY HOUSING REVENUE ACCOUNT INCOME 1999

Town Commissioners	Rental		Miscellaneous		TOTAL	
	income		receipts		INCOME	
	£	-	£	-	£	-
Ardee	0	0	0	0	0	0
Ballybay	935	1,188	0	0	935	1,188
Ballyshannon	8,358	10,612	130	165	8,488	10,777
Bandon	1,140	1,448	0	0	1,140	1,448
Belturbet	1,663	2,111	0	0	1,663	2,111
Boyle	6,560	8,329	0	0	6,560	8,329
Cootehill	20,392	25,892	3,691	4,687	24,083	30,579
Droichead Nua *	11,705	14,862	0	0	11,705	14,862
Gorey	370	470	0	0	370	470
Kilkee *	4,491	5,702	4	5	4,495	5,707
Loughrea	1,758	2,232	2,571	3,264	4,329	5,497
Mountmellick *	1,452	1,844	483	613	1,935	2,457
Muinebheag	1,801	2,287	0	0	1,801	2,287
Mullingar	0	0	0	0	0	0
Passage West	1,307	1,660	0	0	1,307	1,660
Portlaoise *	3,413	4,334	232	295	3,645	4,628
Tuam	16,076	20,412	1,067	1,355	17,143	21,767
Total	81,421	103,383	8,178	10,384	89,599	113,767
GRAND TOTAL	86,342,873	109,632,833	8,803,611	11,178,280	95,146,484	120,811,114

Outurn is provisional as completed returns were not submitted by all local authorities (*denotes where 1998 figures were used)

PART VI - ACTIVITY UNDER SOCIAL HOUSING SCHEMES

SUMMARY

SHARED OWNERSHIP

AFFORDABLE HOUSING

	No. of transactions completed	No. of approvals in principle issued but transactions not yet completed	No. of applications received	No. of houses completed	No. of houses in progress at end of year	Houses proposed at end of year
1996	1,166	999	2,780			
1997	1,042	907	2,690			
1998	805	992	2,962			
1999	1,314	1,502	3,551	40	96	784
2000	1,190	1,520	4,049	86	381	2,227

EXTENSIONS TO LOCAL AUTHORITY HOUSES

IMPROVEMENT WORKS IN LIEU OF RE-HOUSING

	No. of extensions completed	No. of extensions in progress at end of year	No. of extensions commenced at end of year	Extensions approved but not commenced	No. of houses completed	No. of houses in progress at end of year	No. of houses commenced at end of year	Houses approved but not commenced
1996	89	74	145	111	143	101	175	288
1997	112	35	97	143	164	140	203	218
1998	205	65	191	324	152	122	172	236
1999	122	71	129	182	196	94	147	258
2000	153	85	177	159	123	107	128	228

MORTGAGE ALLOWANCE

SITES

	No. of houses surrendered	No. of final approvals issued but houses not yet surrendered	No. of applications received	No. of sites sold	No. of sites approved for sale but not sold at end of year	No. of sites identified for sale at end of year	No. of sites for which applications were received
1996	268	129	371	407	230	494	474
1997	210	104	267	191	173	418	452
1998	153	74	190	279	245	317	430
1999	122	53	131	339	405	489	568
2000	93	38	103	98	156	431	530

RENTAL SUBSIDY

CAPITAL ASSISTANCE

BATHROOMS/SHOWERS

	No. of houses completed	No. of houses in progress at end of year	No. of houses commenced at end of year	No. of houses completed	No. of houses in progress at end of year	No. of houses commenced at end of year	No. where work completed	No. where work in progress at end of year
1996	416	616	n/a	501	n/a	n/a	354	115
1997	411	407	n/a	345	n/a	n/a	262	39
1998	202	514	n/a	283	n/a	n/a	72	24
1999	265	533	n/a	314	n/a	n/a	348	29
2000	467	952	797	484	713	542	212	29

Footnotes:- (a) Affordable Housing introduced in March, 1999; Extensions to Local Authority Houses introduced in May, 1995.
 (b) In order to obtain better information in relation to activity on the Rental Subsidy and Capital Assistance Schemes, a revised format for the collection of the relevant data has been introduced.

SHARED OWNERSHIP - TRANSACTIONS COMPLETED DURING 2000

TRANSACTIONS COMPLETED BY CATEGORY

	Local Authority Tenant/ Tenant Purchaser			Tenants for more than 1 year of a Rental Subsidy Scheme House			Approved for Local Authority Housing			Compliance with Income Formula			GRAND TOTAL
	Eligible for subsidy	Not eligible for subsidy	Sub- Total	Eligible for subsidy	Not eligible for subsidy	Sub- Total	Eligible for subsidy	Not eligible for subsidy	Sub- Total	Eligible for subsidy	Not eligible for subsidy	Sub- Total	
TOTAL	15	18	33	4	4	8	73	70	143	374	632	1,006	1,190
% OF TOTAL	1.3%	1.5%	2.8%	0.3%	0.3%	0.7%	6.1%	5.9%	12.0%	31.4%	53.1%	84.5%	100.0%

TRANSACTIONS COMPLETED BY HOUSE TYPE

	New House		Sub- Total	Second-hand House	GRAND TOTAL
	Own site	Other			
TOTAL	26	115	141	1,049	1,190
% OF TOTAL	2.2%	9.7%	11.8%	88.2%	100.0%

TRANSACTIONS COMPLETED BY HOUSE PRICE

	Less than £50,000	£50,001to £60,000	£60,001to £70,000	£70,001to £80,000	£80,001to £90,000	£90,001to £100,000	Over £100,000	GRAND TOTAL
	<i>Less than _63,487</i>	<i>£63,488to _76,184</i>	<i>£76,185to _88,882</i>	<i>£88,883to _101,579</i>	<i>£101,580to _114,276</i>	<i>£114,277to _126,974</i>	<i>Over _126,974</i>	
TOTAL	69	77	85	86	142	160	571	1,190
% OF TOTAL	5.8%	6.5%	7.1%	7.2%	11.9%	13.4%	48.0%	100.0%

TRANSACTIONS COMPLETED BY INCOME CATEGORY

	Less than £10,000	£10,001to £12,000	£12,001to £14,000	£14,001to £16,000	£16,001to £18,000	£18,001to £20,000	Over £20,000	GRAND TOTAL
	<i>Less than _12,697</i>	<i>£12,698to _15,237</i>	<i>£15,238to _17,776</i>	<i>£17,777to _20,316</i>	<i>£20,317to _22,855</i>	<i>£22,856to _25,395</i>	<i>Over _25,395</i>	
TOTAL	63	57	97	91	185	148	549	1,190
% OF TOTAL	5.3%	4.8%	8.2%	7.6%	15.5%	12.4%	46.1%	100.0%

SHARED OWNERSHIP *

County Councils	No. of transactions completed	No. of approvals in principle issued but transactions not yet completed	No. of applications received
Carlow	4	7	26
Cavan	10	14	35
Clare	19	129	150
Cork	47	165	369
Donegal	2	12	41
D/Laoghaire-Rathdown	40	60	132
Fingal	42	1	348
Galway	5	5	26
Kerry	1	3	31
Kildare	21	96	181
Kilkenny	26	54	61
Laois	17	31	60
Leitrim	2	1	6
Limerick	17	24	85
Longford	9	10	14
Louth	10	24	39
Mayo	10	21	51
Meath	36	60	149
Monaghan	1	8	17
Offaly	11	9	39
Roscommon	1	1	23
Sligo	12	40	51
South Dublin	249	361	649
Tipperary N.R.	7	19	38
Tipperary S.R.	2	6	18
Waterford	4	1	9
Westmeath	10	27	61
Wexford	24	18	47
Wicklow	22	24	96
Total	661	1,231	2,852
County Boroughs			
Cork	36	156	273
Dublin	463	82	831
Galway	2	0	8
Limerick	1	1	22
Waterford	27	50	63
Total	529	289	1,197
GRAND TOTAL	1,190	1,520	4,049

Footnote:- County Council areas include Boroughs and Urban Districts.

* 1 January - 31 December 2000.

AFFORDABLE HOUSING *

County Councils	No. of houses completed	No. of houses in progress at 31 Dec'00	Houses proposed at 31 Dec'00
Carlow	0	0	0
Cavan	0	9	23
Clare	0	0	0
Cork	0	18	163
Donegal	0	0	39
D/Laoghaire-Rathdown	0	0	0
Fingal	0	38	86
Galway	16	70	86
Kerry	0	10	4
Kildare	0	0	0
Kilkenny	0	36	47
Laois	0	0	0
Leitrim	0	0	12
Limerick	0	0	0
Longford	0	6	19
Louth	0	13	76
Mayo	0	0	30
Meath	0	0	0
Monaghan	0	0	0
Offaly	0	0	0
Roscommon	0	0	60
Sligo	0	6	47
South Dublin	0	0	0
Tipperary N.R.	0	0	0
Tipperary S.R.	26	19	20
Waterford	0	0	55
Westmeath	0	31	60
Wexford	0	20	168
Wicklow	0	45	70
Total	42	321	1,065
County Boroughs			
Cork	0	52	0
Dublin	0	0	557
Galway	44	8	418
Limerick	0	0	127
Waterford	0	0	60
Total	44	60	1,162
GRAND TOTAL	86	381	2,227

Footnote:- County Council areas include Boroughs and Urban Districts.

* 1 January - 31 December 2000.

MORTGAGE ALLOWANCE *

County Councils	No. of houses surrendered	No. of final approvals issued but houses not yet surrendered	No. of applications received
Carlow	0	0	1
Cavan	1	0	1
Clare	3	0	7
Cork	9	0	10
Donegal	0	0	0
Dun Laoghaire-Rathdown	3	0	3
Fingal	3	0	3
Galway	0	3	4
Kerry	1	0	3
Kildare	1	1	5
Kilkenny	4	2	4
Laois	2	2	3
Leitrim	1	0	1
Limerick	3	7	6
Longford	1	0	0
Louth	1	0	1
Mayo	4	2	4
Meath	2	0	3
Monaghan	3	3	1
Offaly	1	0	1
Roscommon	0	0	0
Sligo	1	1	1
South Dublin	1	0	4
Tipperary N.R.	1	0	1
Tipperary S.R.	6	9	9
Waterford	2	0	2
Westmeath	1	0	1
Wexford	4	0	6
Wicklow	21	2	4
Total	80	32	89
County Boroughs			
Cork	0	1	1
Dublin	1	2	1
Galway	2	0	2
Limerick	8	0	8
Waterford	2	3	2
Total	13	6	14
GRAND TOTAL	93	38	103

Footnote:- County Council areas include Boroughs and Urban Districts.

* 1 January - 31 December 2000.

BATHROOMS / SHOWERS *

IMPROVEMENT WORKS IN LIEU OF RE-HOUSING *

County Councils	No. where work completed	No. where work in progress at 31 Dec'00	No. of houses completed	No. of houses in progress at 31 Dec'00	No. of houses commenced at 31 Dec'00	Houses approved but not commenced
Carlow	0	0	3	0	0	27
Cavan	0	0	1	0	1	12
Clare	5	0	4	2	4	8
Cork	7	2	14	25	21	10
Donegal	0	0	1	8	5	26
Dun Laoghaire-Rathdown	0	0	0	0	0	1
Fingal	0	0	0	1	0	2
Galway	0	0	7	10	4	4
Kerry	0	0	0	2	1	6
Kildare	0	0	2	3	5	0
Kilkenny	0	0	3	3	1	5
Laois	0	0	1	0	1	4
Leitrim	0	0	2	2	2	5
Limerick	2	0	11	3	2	4
Longford	0	0	2	2	4	11
Louth	1	0	0	0	0	0
Mayo	0	0	4	5	6	6
Meath	0	0	10	0	5	0
Monaghan	0	0	0	0	1	2
Offaly	2	0	1	0	1	2
Roscommon	0	0	3	3	3	6
Sligo	0	0	13	8	12	14
South Dublin	0	0	1	0	1	8
Tipperary N.R.	0	0	8	6	10	9
Tipperary S.R.	0	0	7	0	1	18
Waterford	0	0	4	1	5	2
Westmeath	0	0	1	2	3	0
Wexford	0	0	2	5	4	4
Wicklow	0	0	5	4	8	6
Total	17	2	110	95	111	202
County Boroughs						
Cork	0	0	0	0	0	0
Dublin	195	27	3	9	8	9
Galway	0	0	0	0	0	0
Limerick	0	0	8	2	8	12
Waterford	0	0	2	1	1	5
Total	195	27	13	12	17	26
GRAND TOTAL	212	29	123	107	128	228

Footnote:- County Council areas include Boroughs and Urban Districts.

* 1 January - 31 December 2000.

EXTENSIONS TO LOCAL AUTHORITY HOUSES *

County Councils	No. of extensions completed	No. of extensions in progress at 31 Dec'00	No. of extensions commenced at 31 Dec'00	No. of extensions approved but not commenced at 31 Dec'00
Carlow	1	1	1	10
Cavan	3	1	2	6
Clare	1	0	3	2
Cork	0	0	1	2
Donegal	4	3	4	5
Dun Laoghaire-Rathdown	20	1	21	1
Fingal	3	1	1	6
Galway	4	5	7	7
Kerry	6	6	6	6
Kildare	1	0	2	1
Kilkenny	4	9	9	2
Laois	4	1	5	0
Leitrim	1	1	1	5
Limerick	7	4	2	2
Longford	1	2	3	2
Louth	3	0	3	0
Mayo	4	5	3	5
Meath	4	0	0	2
Monaghan	0	0	0	0
Offaly	0	0	0	0
Roscommon	0	0	0	6
Sligo	5	4	4	4
South Dublin	3	3	6	4
Tipperary N.R.	2	3	5	6
Tipperary S.R.	1	0	1	1
Waterford	12	3	15	5
Westmeath	0	0	1	1
Wexford	7	5	8	6
Wicklow	19	6	23	15
Total	120	64	137	112
County Boroughs				
Cork	0	0	0	0
Dublin	21	14	33	31
Galway	4	6	6	9
Limerick	6	0	0	3
Waterford	2	1	1	4
Total	33	21	40	47
GRAND TOTAL	153	85	177	159

Footnote:- County Council areas include Boroughs and Urban Districts.

* 1 January - 31 December 2000.

SITES *

County Councils	No. of sites sold	No. of sites approved for sale but not sold at 31 Dec'00	No. of sites identified for sale at 31 Dec'00	No. of sites for which applications were received
Carlow	0	0	20	0
Cavan	0	0	0	0
Clare	1	1	1	1
Cork	6	48	61	84
Donegal	0	0	0	0
Dun Laoghaire-Rathdown	0	0	0	0
Fingal	0	0	0	0
Galway	0	1	7	1
Kerry	0	0	4	10
Kildare	0	0	0	0
Kilkenny	21	21	98	71
Laois	0	0	0	0
Leitrim	6	0	1	1
Limerick	1	1	1	2
Longford	0	0	0	0
Louth	0	2	0	0
Mayo	0	0	30	0
Meath	13	21	4	266
Monaghan	1	1	0	0
Offaly	17	17	3	14
Roscommon	0	0	10	0
Sligo	0	6	0	7
South Dublin	0	0	0	0
Tipperary N.R.	1	0	8	0
Tipperary S.R.	0	0	24	46
Waterford	2	5	11	5
Westmeath	0	0	0	0
Wexford	6	0	29	18
Wicklow	23	29	21	4
Total	98	153	333	530
County Boroughs				
Cork	0	0	0	0
Dublin	0	3	0	0
Galway	0	0	0	0
Limerick	0	0	98	0
Waterford	0	0	0	0
Total	0	3	98	0
GRAND TOTAL	98	156	431	530

Footnote:- County Council areas include Boroughs and Urban Districts.

* 1 January - 31 December 2000.

RENTAL SUBSIDY *

County Councils	No. of houses completed	No. of houses in progress at 31 Dec'00	No. of houses commenced at 31 Dec'00
Carlow	40	30	70
Cavan	0	0	0
Clare	41	0	0
Cork	38	22	20
Donegal	22	90	112
Dun Laoghaire-Rathdown	0	0	0
Fingal	0	0	0
Galway	0	34	34
Kerry	0	0	0
Kildare	0	72	72
Kilkenny	0	46	0
Laois	0	0	0
Leitrim	0	0	0
Limerick	0	15	15
Longford	0	10	10
Louth	0	37	0
Mayo	46	0	0
Meath	22	14	34
Monaghan	0	0	0
Offaly	10	0	0
Roscommon	0	0	0
Sligo	31	31	12
South Dublin	143	124	100
Tipperary N.R.	0	0	0
Tipperary S.R.	0	6	6
Waterford	0	0	0
Westmeath	0	0	0
Wexford	43	54	54
Wicklow	0	0	0
Total	436	585	539
County Boroughs			
Cork	0	21	21
Dublin	0	218	126
Galway	12	0	12
Limerick	9	29	0
Waterford	10	99	99
Total	31	367	258
GRAND TOTAL	467	952	797

Footnote:- County Council areas include Boroughs and Urban Districts.
* 1 January - 31 December 2000.

CAPITAL ASSISTANCE *

County Councils	No. of houses completed	No. of houses in progress at 31 Dec'00	No. of houses commenced at 31 Dec'00
Carlow	0	0	0
Cavan	15	0	0
Clare	28	0	0
Cork	39	97	21
Donegal	1	39	0
Dun Laoghaire-Rathdown	6	17	0
Fingal	42	0	0
Galway	32	44	40
Kerry	3	29	29
Kildare	0	6	0
Kilkenny	27	47	34
Laois	0	15	15
Leitrim	0	0	0
Limerick	35	76	65
Longford	0	0	0
Louth	24	11	3
Mayo	56	18	11
Meath	0	31	31
Monaghan	4	19	23
Offaly	13	0	0
Roscommon	10	0	0
Sligo	0	0	0
South Dublin	4	12	4
Tipperary N.R.	0	0	0
Tipperary S.R.	19	18	25
Waterford	0	0	0
Westmeath	0	0	0
Wexford	0	60	33
Wicklow	6	29	35
Total	364	568	369
County Boroughs			
Cork	3	0	3
Dublin	41	106	146
Galway	13	24	24
Limerick	0	15	0
Waterford	63	0	0
Total	120	145	173
GRAND TOTAL	484	713	542

Footnote:- County Council areas include Boroughs and Urban Districts.

* 1 January - 31 December 2000.

**PART VII - TRAVELLER FAMILIES IN LOCAL AUTHORITY OR LOCAL AUTHORITY ASSISTED
ACCOMMODATION, ON THE ROADSIDE OR OTHER PRIVATE ACCOMMODATION AT 24 NOVEMBER '00**

County Councils	ACCOMMODATED																	
	Standard Local Authority Housing			Local Authority Group Housing			Private Houses assisted by Local Authority			Accommodation provided by Voluntary Bodies with L.A. assistance			Local Authority Halting Sites			TOTAL ACCOMMODATED by or with assistance of Local Authority		
	1998	1999	2000	1998	1999	2000	1998	1999	2000	1998	1999	2000	1998	1999	2000	1998	1999	2000
Carlow	21	17	15	9	4	2	5	2	2	1	1	2	3	6	4	39	30	25
Cavan	26	26	29	0	0	0	0	0	0	0	0	0	24	18	14	50	44	43
Clare	33	32	33	10	10	11	7	9	11	1	1	2	20	18	19	71	70	76
Cork	78	84	89	18	16	16	1	4	1	5	6	5	9	13	10	111	123	121
Donegal	50	61	66	0	0	4	1	0	2	0	0	0	16	20	10	67	81	82
Dun Laoghaire-Rathdown	32	28	32	25	24	20	0	0	0	0	0	0	22	21	22	79	73	74
Fingal	27	23	26	5	13	16	0	0	0	0	0	0	149	138	149	181	174	191
Galway	186	184	189	30	31	38	9	7	5	1	3	4	26	24	27	252	249	263
Kerry	175	181	185	2	2	2	1	1	1	0	0	0	25	25	25	203	209	213
Kildare	5	3	10	0	0	0	2	2	2	0	0	0	30	25	29	37	30	41
Kilkenny	20	23	24	3	3	3	11	8	10	2	3	3	17	16	19	53	53	59
Laois	20	23	28	0	1	3	0	0	1	0	3	2	21	23	25	41	50	59
Leitrim	3	2	1	0	0	0	1	1	1	0	0	0	17	21	20	21	24	22
Limerick	93	95	101	11	11	14	12	29	16	0	0	0	28	29	26	144	164	157
Longford	118	124	131	0	0	0	2	2	1	0	0	0	16	14	14	136	140	146
Louth	87	92	102	18	18	18	15	16	17	0	0	5	18	20	15	138	146	157
Mayo	89	90	100	3	3	3	1	2	2	0	0	4	12	8	13	105	103	122
Meath	54	54	54	34	34	34	0	0	0	3	4	4	42	42	42	133	134	134
Monaghan	49	49	51	0	0	0	1	0	0	0	0	0	7	7	5	57	56	56
Offaly	47	51	59	0	0	0	3	3	3	1	1	1	33	23	23	84	78	86
Roscommon	15	14	13	2	2	9	0	0	0	0	0	0	24	22	19	41	38	41
Sligo	20	19	19	1	1	1	0	0	0	0	0	0	25	16	33	46	36	53
South Dublin	77	77	78	8	19	19	17	18	18	0	0	0	199	160	159	301	274	274
Tipperary N.R.	57	62	66	0	0	3	2	2	2	1	1	1	14	12	12	74	77	84
Tipperary S.R.	35	36	41	0	6	8	2	4	4	0	0	0	22	18	12	59	64	65
Waterford	9	10	10	4	4	3	0	0	0	0	0	0	9	11	14	22	25	27
Westmeath	25	47	53	0	0	0	3	0	0	0	0	0	21	30	20	49	77	73
Wexford	61	75	83	13	13	13	11	11	16	1	1	2	16	20	25	102	120	139
Wicklow	43	43	45	0	0	2	0	2	2	1	1	1	19	19	20	63	65	70
County Boroughs																		
Cork	120	116	114	0	0	0	0	1	1	0	0	0	59	63	62	179	180	177
Dublin	32	43	51	110	109	107	1	2	2	1	0	2	130	141	187	274	295	349
Galway	112	113	123	24	22	22	1	1	1	0	0	0	27	31	26	164	167	172
Limerick	16	13	14	9	10	9	1	1	2	0	0	0	34	31	38	60	55	63
Waterford	65	63	75	0	0	0	0	0	0	0	1	2	14	15	14	79	79	91
TOTALS	1,900	1,973	2,110	339	356	380	110	128	123	18	26	40	1,148	1,100	1,152	3,515	3,583	3,805

**TRAVELLER FAMILIES IN LOCAL AUTHORITY OR LOCAL AUTHORITY ASSISTED ACCOMMODATION ,
ON THE ROADSIDE OR OTHER PRIVATE ACCOMMODATION AT 24 NOVEMBER '00**

County Councils	ON THE ROADSIDE						GRAND TOTAL ACCOMMODATED by or with assistance of Local Authority and on the Roadside		
	Indigenous			Transient			1998	1999	2000
	1998	1999	2000	1998	1999	2000			
Carlow	28	30	20	2	0	0	69	60	45
Cavan	8	5	5	0	0	0	58	49	48
Clare	35	37	39	2	0	4	108	107	119
Cork	27	28	20	17	17	10	155	168	151
Donegal	17	35	39	6	0	0	90	116	121
Dun Laoghaire-Rathdown	29	23	29	15	0	0	123	96	103
Fingal	71	83	74	10	12	11	262	269	276
Galway	72	80	64	2	4	4	326	333	331
Kerry	20	13	12	0	3	3	223	225	228
Kildare	12	15	14	13	23	43	62	68	98
Kilkenny	9	8	7	8	4	6	70	65	72
Laois	23	15	21	1	0	0	65	65	80
Leitrim	0	0	0	1	0	0	22	24	22
Limerick	40	53	32	7	3	7	191	220	196
Longford	6	6	8	2	12	8	144	158	162
Louth	16	11	13	0	0	0	154	157	170
Mayo	53	56	53	1	1	0	159	160	175
Meath	16	8	7	0	4	5	149	146	146
Monaghan	4	0	2	3	1	0	64	57	58
Offaly	49	56	55	11	22	4	144	156	145
Roscommon	9	9	2	3	0	1	53	47	44
Sligo	16	12	14	12	11	16	74	59	83
South Dublin	76	90	76	0	0	0	377	364	350
Tipperary N.R.	36	29	27	7	7	4	117	113	115
Tipperary S.R.	10	21	19	0	4	1	69	89	85
Waterford	3	1	2	4	11	10	29	37	39
Westmeath	13	11	4	0	0	14	62	88	91
Wexford	128	110	88	2	0	3	232	230	230
Wicklow	29	26	22	11	17	23	103	108	115
County Boroughs									
Cork	7	12	9	17	4	37	203	196	223
Dublin	103	95	62	0	18	0	377	408	411
Galway	16	26	25	0	0	0	180	193	197
Limerick	2	7	4	0	4	3	62	66	70
Waterford	7	8	2	1	6	6	87	93	99
TOTALS	990	1,019	870	158	188	223	4,663	4,790	4,898

PART VIII - HOUSING GRANTS

NEW HOUSE GRANTS

Year and Quarter	GRANTS APPROVED			GRANTS PAID		
	Dept of the Environment and Local Government	An Roinn Ealaíon, Oidhreachta, Gaeltachta agus Oileán	Total	Dept of the Environment and Local Government	An Roinn Ealaíon, Oidhreachta, Gaeltachta agus Oileán	Total
1996	10,802	129	10,931	10,713	113	10,826
1997	10,422	152	10,574	10,355	115	10,470
1998	9,888	135	10,023	10,349	98	10,447
1999	9,296	173	9,469	9,129	127	9,256
2000	10,021	182	10,203	9,994	121	10,115
1999						
QI	2,330	26	2,356	1,926	20	1,946
QII	2,434	50	2,484	2,310	26	2,336
QIII	2,284	64	2,348	2,404	33	2,437
QIV	2,248	33	2,281	2,489	48	2,537
2000						
QI	2,510	48	2,558	2,072	26	2,098
QII	2,488	34	2,522	2,555	28	2,583
QIII	2,620	49	2,669	2,629	35	2,664
QIV	2,403	51	2,454	2,738	32	2,770

HOUSE IMPROVEMENT GRANTS

Year and Quarter	GRANTS APPROVED		GRANTS PAID		
	Thatched Roof	An Roinn Ealaíon, Oidhreachta, Gaeltachta agus Oileán	Thatched Roof	*Misc.	An Roinn Ealaíon, Oidhreachta, Gaeltachta agus Oileán
1996	248	505	175	2,687	647
1997	181	534	154	3,276	495
1998	204	621	139	3,338	522
1999	356	726	150	4,492	564
2000	214	967	200	5,232	678
1999					
QI	48	121	17	496	104
QII	62	186	25	561	124
QIII	173	220	47	934	143
QIV	73	199	61	2,501	193
2000					
QI	57	219	(r) 30	528	117
QII	49	250	45	999	166
QIII	51	309	74	1,713	202
QIV	57	189	51	1,992	193

*Miscellaneous grants = recoupments to local authorities in respect of grants paid by them for essential repairs and adaptation of houses for disabled persons.

DISABLED PERSONS & ESSENTIAL REPAIRS GRANTS-SUMMARY OF PAYMENTS BY LOCAL AUTHORITIES

DISABLED PERSONS GRANTS

Year and Quarter	Number	Value £000	Value _000
1996	2,172	8,924	11,331
1997	2,231	8,631	10,959
1998	2,455	10,295	13,072
1999	2,875	12,498	15,869
2000	3,646	21,810	27,693
1999			
QI	617	2,509	3,186
QII	665	2,889	3,668
QIII	738	3,366	4,274
QIV	855	3,735	4,742
2000			
QI	(r) 792	(r) 4,091	5,194
QII	(r) 915	(r) 4,959	6,297
QIII	(r) 901	(r) 5,642	7,164
QIV	1,038	7,117	9,037

ESSENTIAL REPAIRS GRANTS

Year and Quarter	Number	Value £000	Value _000
1996	747	1,295	1,644
1997	896	1,523	1,934
1998	957	1,756	2,230
1999	966	2,157	2,739
2000	1,366	4,030	5,117
1999			
QI	209	390	495
QII	160	342	434
QIII	281	646	820
QIV	316	779	989
2000			
QI	301	815	1,035
QII	(r) 310	(r) 860	1,092
QIII	(r) 338	(r) 1,004	1,275
QIV	417	1,351	1,715

Disabled persons grants are payable for works necessary for the proper accommodation of a physically disabled, severely mentally handicapped or severely mentally ill person. The maximum grant payable is equivalent to the full cost of adapting a local authority house and 90% of the approved cost of adapting a private house. Two-thirds of the grant paid is recouped to the local authority by the Department of the Environment and Local Government subject to a maximum recoupment of £10,666 (£13,543) in each case.

DISABLED PERSONS GRANTS - ACTIVITY IN 2000

County Councils	Number of payments	Number of approvals	Number of applications
Carlow	15	29	92
Cavan	66	111	143
Clare	59	90	208
Cork	284	367	456
Donegal	243	220	460
Dun Laoghaire-Rathdown	81	133	127
Fingal	55	95	214
Galway	174	226	437
Kerry	81	186	280
Kildare	124	108	193
Kilkenny	40	60	160
Laois	40	54	79
Leitrim	146	101	248
Limerick	86	116	171
Longford	90	61	220
Louth	38	63	105
Mayo	148	243	443
Meath	253	126	393
Monaghan	52	52	120
Offaly	18	19	121
Roscommon	106	90	236
Sligo	100	129	209
South Dublin	143	168	241
Tipperary N.R.	70	70	159
Tipperary S.R.	85	125	299
Waterford	48	34	146
Westmeath	27	39	60
Wexford	40	71	110
Wicklow	79	102	131
Total	2,791	3,288	6,261
County Boroughs			
Cork	71	100	273
Dublin	696	697	1,308
Galway	28	36	81
Limerick	17	25	70
Waterford	43	58	90
Total	855	916	1,822
GRAND TOTAL	3,646	4,204	8,083

Footnote:- County Council areas include Boroughs and Urban Districts.

ESSENTIAL REPAIRS GRANTS - ACTIVITY IN 2000

County Councils	Number of payments	Number of approvals	Number of applications
Carlow	38	63	96
Cavan	33	80	157
Clare	43	51	103
Cork	122	133	181
Donegal	94	134	334
Dun Laoghaire-Rathdown	0	0	0
Fingal	3	6	15
Galway	89	139	278
Kerry	89	156	235
Kildare	32	34	68
Kilkenny	37	28	69
Laois	23	22	43
Leitrim	141	142	252
Limerick	18	20	95
Longford	50	34	140
Louth	1	0	15
Mayo	123	102	298
Meath	213	132	306
Monaghan	12	14	43
Offaly	3	1	22
Roscommon	54	97	122
Sligo	78	156	119
South Dublin	0	0	0
Tipperary N.R.	5	5	35
Tipperary S.R.	0	0	0
Waterford	3	1	6
Westmeath	30	40	82
Wexford	1	9	27
Wicklow	10	9	78
Total	1,345	1,608	3,219
County Boroughs			
Cork	0	0	0
Dublin	21	54	87
Galway	0	0	0
Limerick	0	0	0
Waterford	0	0	0
Total	21	54	87
GRAND TOTAL	1,366	1,662	3,306

Footnote:- County Council areas include Boroughs and Urban Districts.

WATER AND SEWERAGE GRANTS

GRANTS APPROVED

Year and Quarter	Dept of the Environment and Local Government	An Roinn Ealaíon, Oidhreachta, Gaeltachta agus Oileán	Total
1996	3,531	89	3,620
1997	1,499	66	1,565
1998	1,285	113	1,398
1999	598	102	700
2000	17	175	192
1999			
QI	453	19	472
QII	103	23	126
QIII	41	38	79
QIV	1	22	23
2000			
QI	7	24	31
QII	0	45	45
QIII	10	61	71
QIV	0	45	45

GRANTS PAID

Year and Quarter	Dept of the Environment and Local Government	An Roinn Ealaíon, Oidhreachta, Gaeltachta agus Oileán	Total
1996	3,117	106	3,223
1997	2,226	65	2,291
1998	2,611	69	2,680
1999	426	88	514
2000	157	91	248
1999			
QI	29	16	45
QII	228	18	246
QIII	99	17	116
QIV	70	37	107
2000			
QI	8	11	19
QII	95	23	118
QIII	52	24	76
QIV	2	33	35

Water and sewerage grants include grants for the provision of one or both of these services.

PART IX - ENFORCEMENT OF STATUTORY REQUIREMENTS :- RENTED HOUSING IN 2000

County Councils	REGISTRATION			STANDARDS			RENT BOOKS		
	Inspections carried out	Notices served	Legal action initiated	Inspections carried out	Dwellings inspected not meeting regulatory requirements	Legal action initiated	Inspections carried out	Notices served	Legal action initiated
Carlow	0	0	0	0	0	0	0	0	0
Cavan	0	0	0	0	0	0	0	0	0
Clare	0	6	3	1	0	0	0	0	0
Cork	10	300	0	12	1	0	10	0	0
Donegal	0	0	0	0	0	0	0	0	0
Dun Laoghaire-Rathdown	680	0	0	0	0	0	0	0	0
Fingal	0	0	0	542	21	0	494	0	0
Galway	0	65	6	67	31	15	0	0	0
Kerry	96	0	0	95	32	0	95	0	0
Kildare	5	7	1	5	4	0	5	5	0
Kilkenny	0	0	0	0	0	0	0	0	0
Laois	0	0	0	0	0	0	0	0	0
Leitrim	0	0	0	0	0	0	0	0	0
Limerick	397	0	0	5	1	0	38	34	0
Longford	0	0	0	0	0	0	0	0	0
Louth	64	0	0	0	0	0	0	0	0
Mayo	1	0	0	0	0	0	0	0	0
Meath	0	0	0	6	4	0	0	0	0
Monaghan	0	0	0	0	0	0	0	0	0
Offaly	0	0	0	15	10	0	0	0	0
Roscommon	0	0	0	0	0	0	0	0	0
Sligo	168	168	0	49	33	0	7	7	0
South Dublin	359	0	0	359	79	0	359	50	0
Tipperary N.R.	0	0	0	0	0	0	0	0	0
Tipperary S.R.	28	1	0	28	6	0	0	0	0
Waterford	0	50	0	15	4	0	0	45	0
Westmeath	0	0	0	6	3	1	0	0	0
Wexford	1	1	0	0	0	0	0	0	0
Wicklow	0	0	0	0	0	0	0	0	0
Total	1,809	598	10	1,205	229	16	1,008	141	0
County Boroughs									
Cork	0	51	0	738	514	0	738	0	0
Dublin	1,480	199	0	3,032	1,432	0	1,674	25	0
Galway	0	259	0	3	2	0	0	0	0
Limerick	0	0	0	8	7	1	0	0	0
Waterford	0	0	0	0	0	0	0	0	0
Total	1,480	509	0	3,781	1,955	1	2,412	25	0
GRAND TOTAL	3,289	1,107	10	4,986	2,184	17	3,420	166	0

Footnotes:- County Council areas include Boroughs and Urban Districts.

Outturn is provisional as completed returns were not submitted by all local authorities.

PART X - HOUSING (REGISTRATION OF RENTED HOUSES) REGULATIONS 1996

County Councils	Number of houses registered at 31 December 2000	Number of landlords of registered houses at 31 December 2000
Carlow	629	398
Cavan	156	84
Clare	550	449
Cork	1,180	807
Donegal	36	28
Dun Laoghaire-Rathdown	710	447
Fingal	198	161
Galway	73	86
Kerry	1,165	675
Kildare	785	580
Kilkenny	256	232
Laois	167	104
Leitrim	54	45
Limerick	1,041	767
Longford	96	60
Louth	559	450
Mayo	305	68
Meath	664	236
Monaghan	164	91
Offaly	130	84
Roscommon	51	33
Sligo	192	178
South Dublin	455	392
Tipperary N.R.	179	159
Tipperary S.R.	365	235
Waterford	413	259
Westmeath	438	282
Wexford	552	335
Wicklow	209	166
Total	11,772	7,891
County Boroughs		
Cork	1,006	785
Dublin	10,393	4,735
Galway	1,557	1,022
Limerick	279	161
Waterford	379	245
Total	13,614	6,948
GRAND TOTAL	25,386	14,839

Footnotes:- County Council areas include Boroughs and Urban Districts.

These figures include only registered houses and landlords where annual registration fees are paid up to date and does not include 4,873 houses and 5,733 landlords registered in 1999 but not re-registered in 2000.

PART XI - CAPITAL INVESTMENT IN HOUSING

PUBLIC CAPITAL EXPENDITURE ON HOUSING MAIN CONSTITUENTS

	1991	1992	1993	1994	1995	1996	1997	1998	1999	2000
	<i>£M</i>	<i>£M</i>	<i>£M</i>	<i>£M</i>	<i>£M</i>	<i>£M</i>	<i>£M</i>	<i>£M</i>	<i>£M</i>	<i>£M</i>
	(<i>M</i>)	(<i>M</i>)	(<i>M</i>)	(<i>M</i>)	(<i>M</i>)	(<i>M</i>)	(<i>M</i>)	(<i>M</i>)	(<i>M</i>)	(<i>M</i>)
Local Authority Housing	64.8 (82.3)	65.5 (83.2)	92.6 (117.6)	157.1 (199.5)	180.3 (228.9)	191.9 (243.7)	218.2 (277.1)	242.2 (307.5)	279.1 (354.4)	411.6 (522.6)
Voluntary Housing	11.1 (14.1)	13.2 (16.8)	20.5 (26.0)	27.5 (34.9)	33.8 (42.9)	33.0 (41.9)	27.3 (34.7)	27.0 (34.3)	37.2 (47.2)	77.7 (98.7)
Shared Ownership	0.7 (0.9)	19.0 (24.1)	35.0 (44.4)	44.4 (56.4)	50.0 (63.5)	50.0 (63.5)	43.1 (54.7)	50.2 (63.7)	111.6 (141.7)	107.5 (136.5)
House Purchase and Improvement Loans etc.	29.1 (36.9)	28.6 (36.3)	24.2 (30.7)	19.2 (24.4)	18.0 (22.9)	20.6 (26.2)	18.8 (23.9)	19.9 (25.3)	(r) 23.1 (29.3)	30.4 (38.6)
Private Housing Grants	14.7 (18.7)	13.0 (16.5)	15.3 (19.4)	26.5 (33.6)	33.9 (43.0)	36.7 (46.6)	36.6 (46.5)	36.9 (46.9)	36.5 (46.3)	46.8 (59.4)
Affordable Housing	-	-	-	-	-	-	-	-	20.4 (25.9)	4.3 (5.5)
Other Housing	3.2 (4.1)	2.0 (2.5)	2.0 (2.5)	4.0 (5.1)	3.0 (3.8)	4.0 (5.1)	4.1 (5.2)	5.0 (6.3)	6.0 (7.6)	8.0 (10.2)
TOTAL	123.6 (156.9)	141.3 (179.4)	189.6 (240.7)	278.7 (353.9)	319.0 (405.0)	336.2 (426.9)	348.1 (442.0)	381.2 (484.0)	513.9 (652.5)	686.3 (871.4)

CAPITAL FORMATION IN HOUSING (excluding site costs)

	(r) 1991	(r) 1992	(r) 1993	(r) 1994	(r) 1995	(r) 1996	(r) 1997	(r) 1998	(r) 1999	(p) 2000
	<i>£M</i>	<i>£M</i>	<i>£M</i>	<i>£M</i>	<i>£M</i>	<i>£M</i>	<i>£M</i>	<i>£M</i>	<i>£M</i>	<i>£M</i>
	(<i>M</i>)	(<i>M</i>)	(<i>M</i>)	(<i>M</i>)	(<i>M</i>)	(<i>M</i>)	(<i>M</i>)	(<i>M</i>)	(<i>M</i>)	(<i>M</i>)
Gross National Product at market prices *	26,460 (33,597)	27,992 (35,543)	30,383 (38,578)	32,908 (41,785)	36,725 (46,631)	40,487 (51,408)	46,428 (58,951)	53,193 (67,541)	59,068 (75,001)	67,800 (86,088)
Gross Domestic fixed capital formation *	5,072 (6,440)	5,211 (6,617)	5,259 (6,678)	6,043 (7,673)	7,072 (8,980)	8,512 (10,808)	10,650 (13,523)	13,275 (16,856)	16,175 (20,538)	19,200 (24,379)
Capital formation in housing	919 (1,167)	1,075 (1,365)	1,018 (1,293)	1,334 (1,694)	1,567 (1,990)	1,900 (2,413)	2,482 (3,151)	3,260 (4,139)	4,129 (5,243)	5,169 (6,563)
Capital formation in housing as a percentage of gross domestic fixed capital formation	18.1%	20.6%	19.4%	22.1%	22.2%	22.3%	23.3%	24.6%	25.5%	26.9%
Capital formation in housing as a percentage of gross national product	3.5%	3.8%	3.4%	4.1%	4.3%	4.7%	5.3%	6.1%	7.0%	7.6%

* European System of Accounts (ESA95)